

Pilot Scale Softgel Machines

SGL107/207 NextGen



Lab Scale Softgel Machines

SGL107/SGL207 NextGen



Features

- Laboratory scale soft capsule machine
 - Motion Control System: the most important mechanical gearing replaced with electronic gearing in synchronized loops, using servo motors
 - Die Roll dimensions: approximately 4" x 3"
 - Operation speed – 0.5 – 5RPM
 - Control of all production and process parameters using Allen Bradley programmable Logic Controllers (PLC) with touchscreen
 - Electrical panel and PLC incorporated within machine
 - Sealed construction to prevent any possible rust and allows easy cleaning and maintenance
 - The outside covers of the machine are completely made from stainless steel, designed according to the GMP/FDA requirements
 - CRR 21 Part 11 compliance software
-



Mechanism

Medicine Pump System

- The medicine pump is independently driven by a servo motor and electronically synchronized with the Die Rolls
- During a capsule size change, the operator inputs the number of die roll cavities using the touchscreen and the medicine pump timing is done electronically (no gear change is required)
- Precise injection timing adjustments are done electronically using the touchscreen; The timing can also be adjusted during operation, without stopping the machine. Since the timing can also be adjusted with such high accuracy, this improves on seal integrity of the capsule, which will increase capsule quality
- The slide lubrication system for the pump is integrated in the drive mechanism
- Four plunger standard pump

Spreader Box

- Adaptable gelatin ribbon width that allows a minimum loss of ribbon net;
- Bronze construction
- Gelatin level control is done electronically for gravity feeding from individual attached tanks; ground level gelatin feeding also available, using a pressurized gelatin tank (optional)

Casting Drums

- "In-line" construction allows a straight gelatin ribbon transfer to the oil rolls and die rolls without any twisting
- Water/Air cooled cast drums

Ribbon Lubrication & Drive System

- Porous material for lubrication roller
- Electronic metering pump and a precise distributor valve allows accurate ribbon lubrication
- Easy and accurate oil quantity adjustment
- Independent electrical drives allow fine adjustments of the ribbon tension on each side
- Easy access from the operator side to feed the ribbon on the oil rollers

Lab Scale Softgel Machines

SGL107/SGL207 NextGen



Mechanism cont'd

Die Roll Pressure System

- Manually operated pneumatic valves for high and low pressure

The Divider (Chute Assembly)

- Variable speed independent drive
- Sealed construction

Mangle Rolls

- Electronic speed adjustment allows fine tuning of the ribbon tension and helps in the cutting process

Wedge Lifting System

- Air actuated lifting with safe middle position of the injection wedge;

Machine Lubrication

- Closed lubrication system with dedicated pump for the Die Roll housing

Soft Capsule Transfer Conveyor

- Variable speed drive motor
- Bi-directional

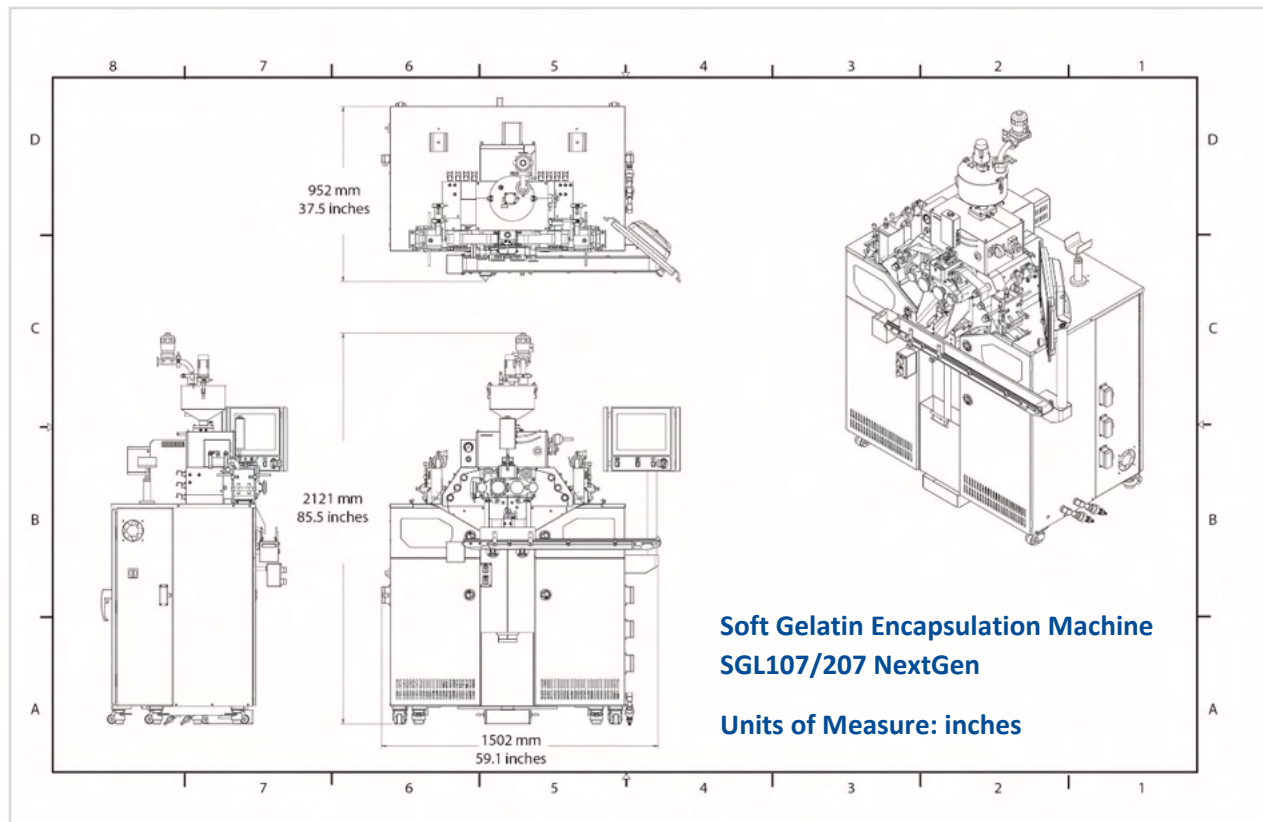
Set of aluminum die rolls (4" x 3") and change parts

- Specially coated injection wedge
- Storage case
- Die size – per customer requirements

Lab Scale Softgel Machines

SGL107/SGL207 NextGen

Specifications



SGL 107/207 NextGen	
Dimensions (mm/inches)	1403W x 916D x 2012H (mm) / 55.2" x 36.0" x 79.2" (inches)
Weight (kg/lb)	900 KGS / 1984 LBS
Machine Electrical Power	12 KVA
Compressed Air	100 PSI
Chilled Water	3.8 GPM

TECHNOPHAR

Technophar Global Headquarters

www.technophar.com

Copyright Technophar ©2021

2021-10-26rev.