

technophar

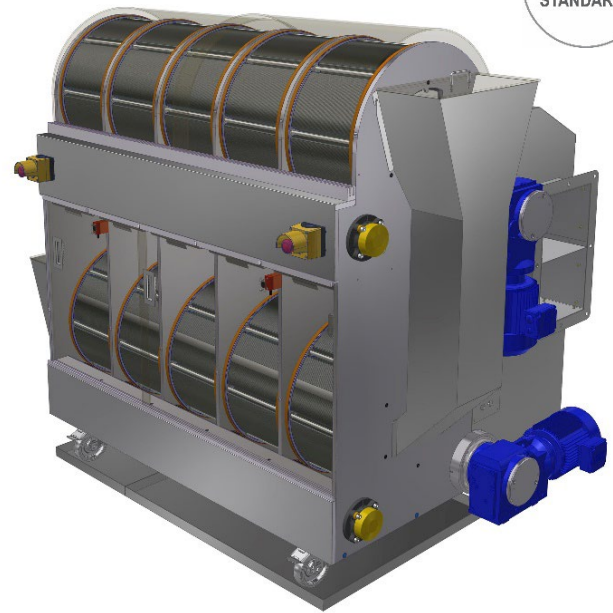
BY ROQUETTE

Soft Gel Tumble Dryer

TD10 Models



Single Deck



Double Deck

Soft Gel Tumble Dryer

TD10 Models

Technophar's tumble dryers are offered as standalone units or in combination with our encapsulation machines. The TD10 model fulfills cGMP standards of the pharmaceutical industry. Variable speed, energy-efficient design, automatic capsule transfer, built-in gentle heating, and more production parameters are set using a Programmable Logic Controller (PLC) with a touchscreen. Light-weight baskets allow for quick changeovers, easy clean-up, and inspection.

Features

- Anodized aluminum frame and stainless-steel covers with number 4 finish for fast, thorough cleaning.
- Variable basket speeds (up to 80 RPM), completely adjusted through the operator's panel.
- Maximum basket load - 12 kg.
- Built-in heating option is available upon request, allowing for gentle heating of specific products.
- Lightweight baskets with stainless steel perforated plate allow for quick changeovers, easy clean-up and inspection.
- Lightweight, simple to install, clear Lexan covers.
- Lighted motor housing service area.
- Quickly change filter access doors.
- Easy lubrication from the side of the machine.
- Smooth surface in all areas for complete cleaning.
- Energy-efficient design/size allows for increased production space.
- Built-in safety feature, so when the cover is off, the dryer stops rotation.

Mechanism

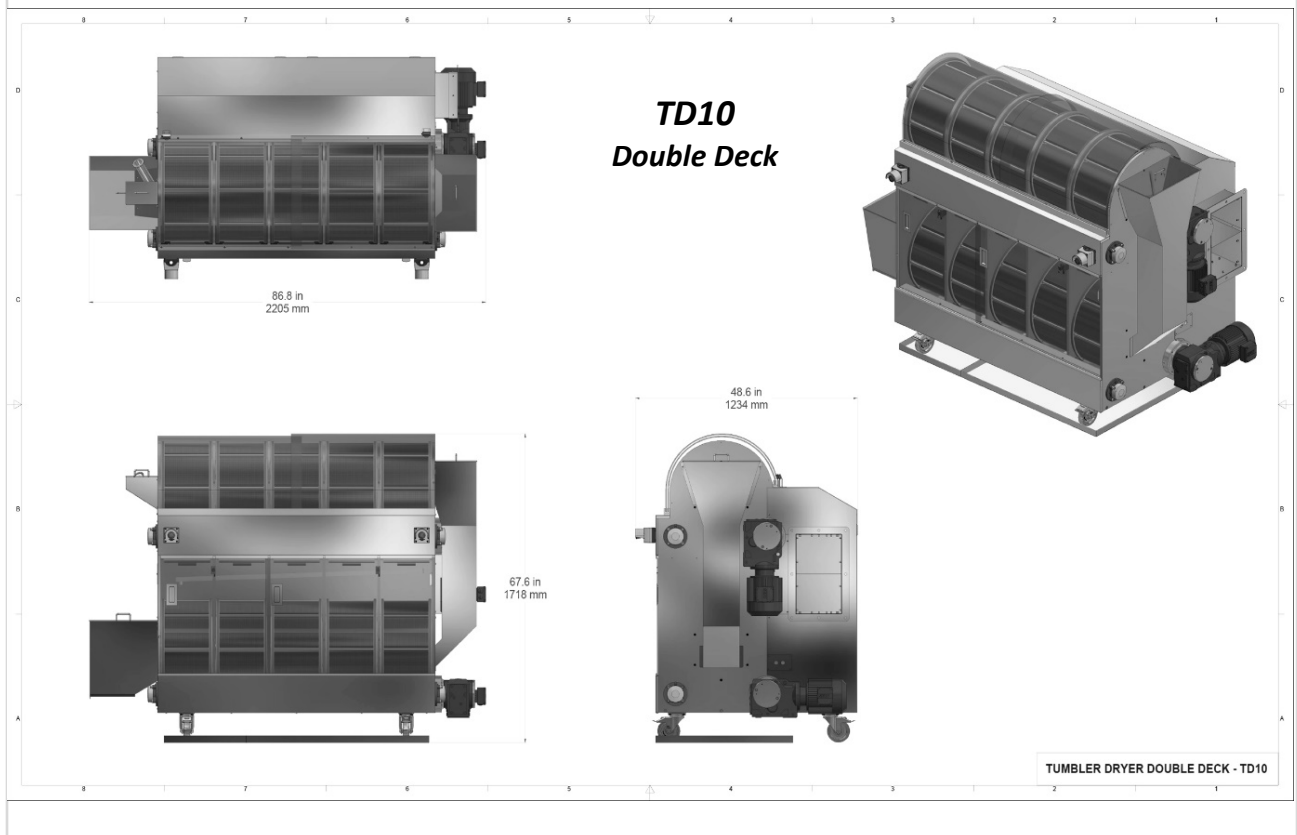
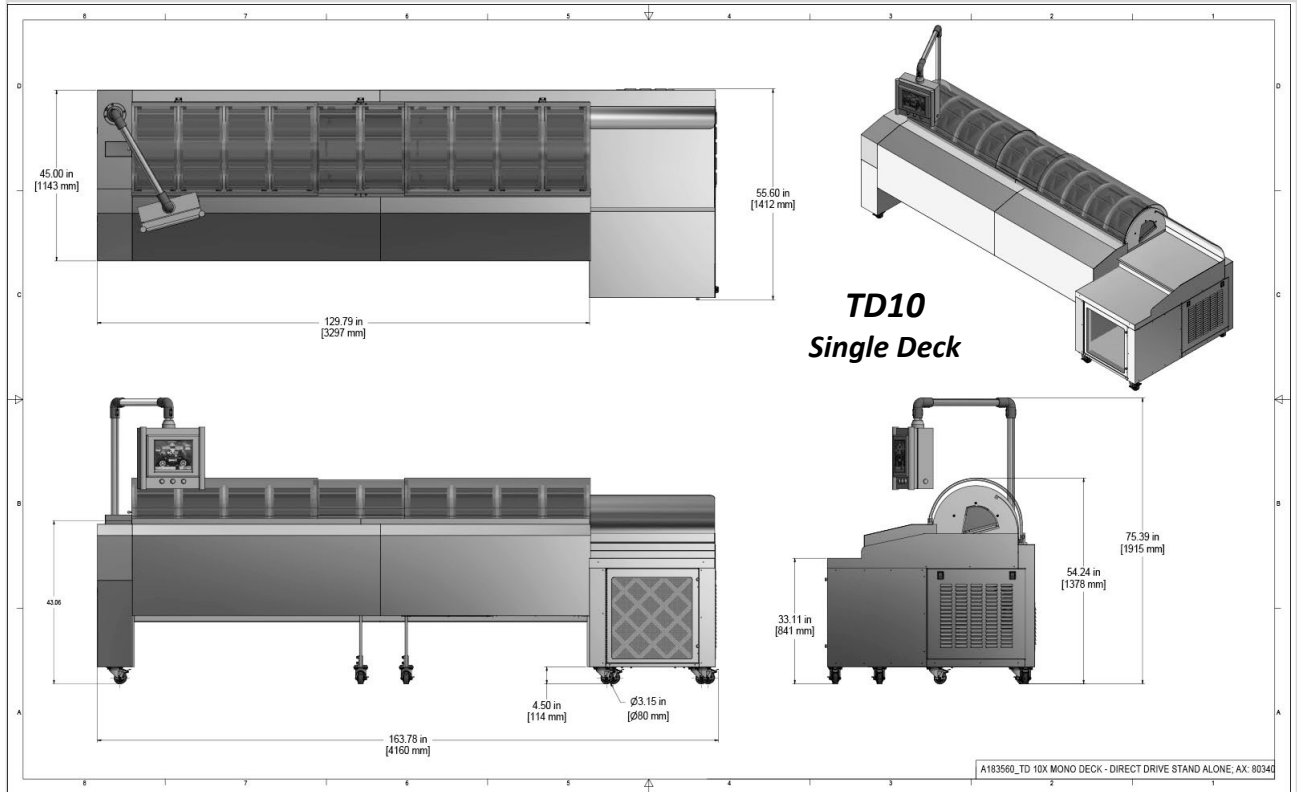
Highlights

- PLC is incorporated within the standalone unit.
- One variable speed direct drive electrical motor rotates the baskets.
- Programmable drying and capsule transfer time.
- Pneumatic actuated doors allow capsules to be transferred throughout the tumbler. and be discharged at the end of the drying cycle.

Soft Gel Tumble Dryer

TD10 Models

Specifications



Soft Gel Tumble Dryer

TD10 Models

Model No.	
TD10	Soft Gel Tumble Dryer – Single Deck
Specifications	
Compressed Air	8 Bar
Machine TD Electrical Power	12KVA without heaters
TD10 Dimensions (mm/inches)	4160mmW x 1412mmD x 1378mmH (mm) / 163.78" W x 55.60" D x 54.24" H (inches)
Weight	1450kg (3197 lbs.)
Model No.	
TD10 - Double Deck	Soft Gel Tumble Dryer – Double Deck
Specifications	
Compressed Air	6 Bar
Machine TD Electrical Power	12KVA without heaters
Unit Size	Smaller footprint, allowing for flexible layout configurations/positioning
TD10 – Double Deck Dimensions (mm/inches)	2205mmW x 1234mmD x 1718mmH (mm) / 86.8" W x 48.6" D x 67.6" H
Weight	870kg (1918 lbs.)

TECHNOPHAR

Technophar Global Headquarters

www.technophar.com

*Last Updated: April 2026
Copyright Technophar ©2026*