

technophar

A ROQUETTE COMPANY

Soft Gel Tumble Dryer

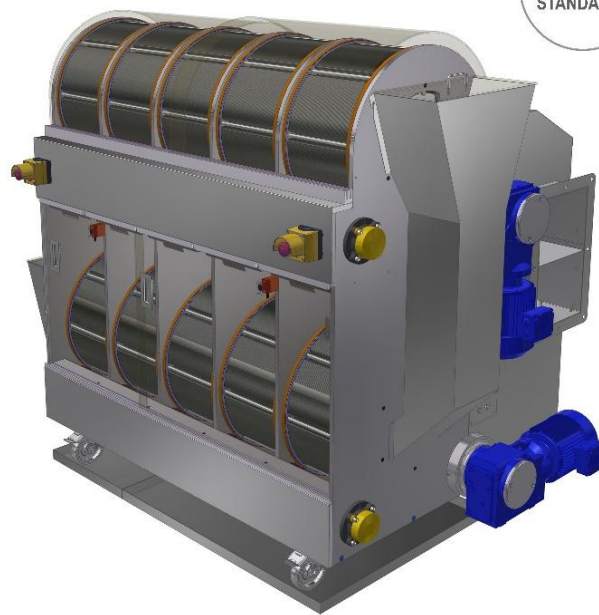
TD10 Models



Single Deck



Double Deck



Soft Gel Tumble Dryer

TD10 Model

Technophar's tumble dryers are offered as a standalone unit or in combination with our encapsulation machines. The TD10 model fulfils cGMP standards of the pharmaceutical industry. Variable speed, energy-efficient design, automatic capsule transfer, built-in gentle heating, and more production parameters are set using a Programmable Logic Controller (PLC) with a touchscreen. Light-weight baskets allow for quick changeovers, easy clean-up, and inspection.

Features

- Anodized aluminum frame and stainless-steel covers with number 4 finish for fast, thorough cleaning.
- Variable basket speeds (up to 80 RPM), completely adjusted through the operator's panel.
- Maximum basket load - 12 kg.
- Built-in heating option available upon request, allowing for gentle heating of specific products.
- Lightweight baskets with stainless steel perforated plate allow for quick changeovers, easy clean-up and inspection.
- Lightweight, simple to install, clear Lexan covers.
- Lighted motor housing service area.
- Quickly change filter access doors.
- Easy lubrication from the side of the machine.
- Smooth surface in all areas for complete cleaning.
- Energy-efficient design/size allows for increased production space.
- Built-in safety feature, so when the cover is off, the dryer stops rotation.

Mechanism

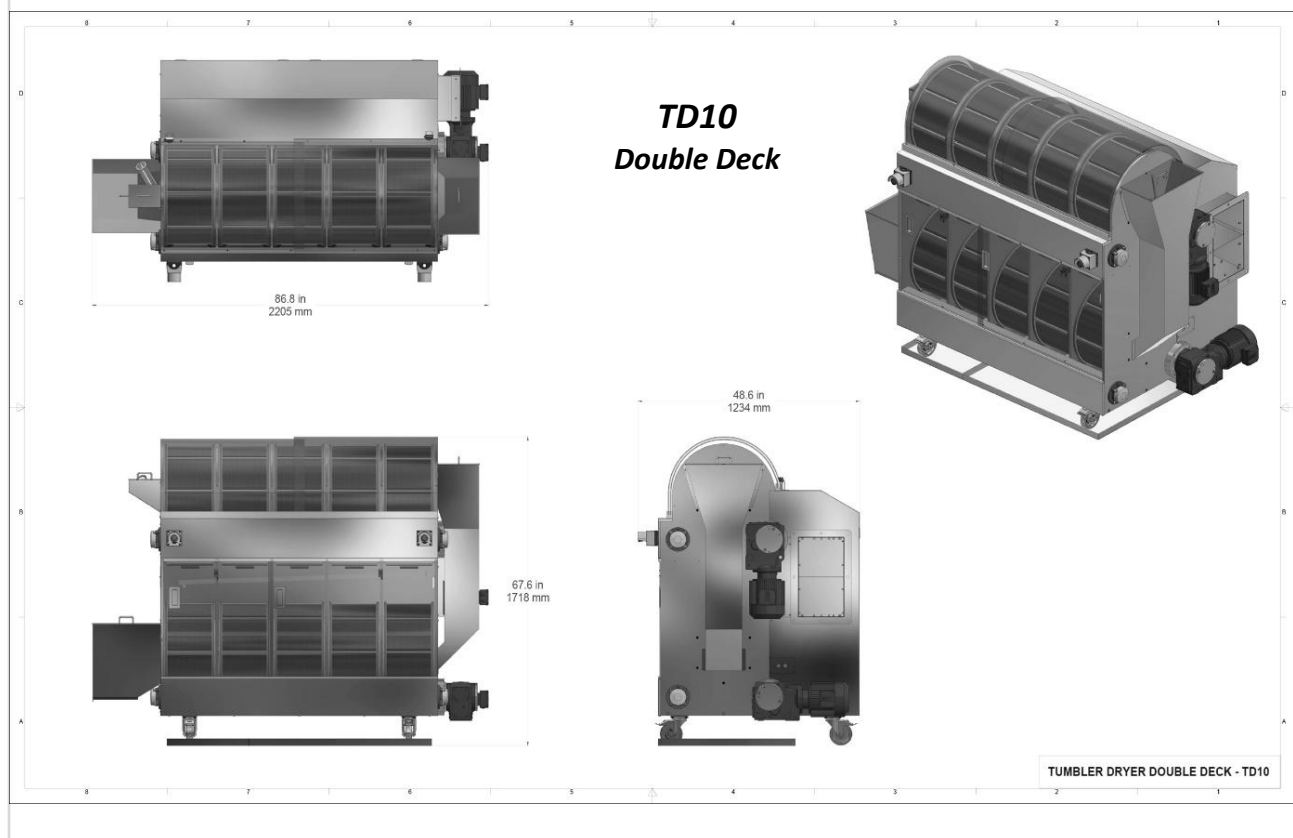
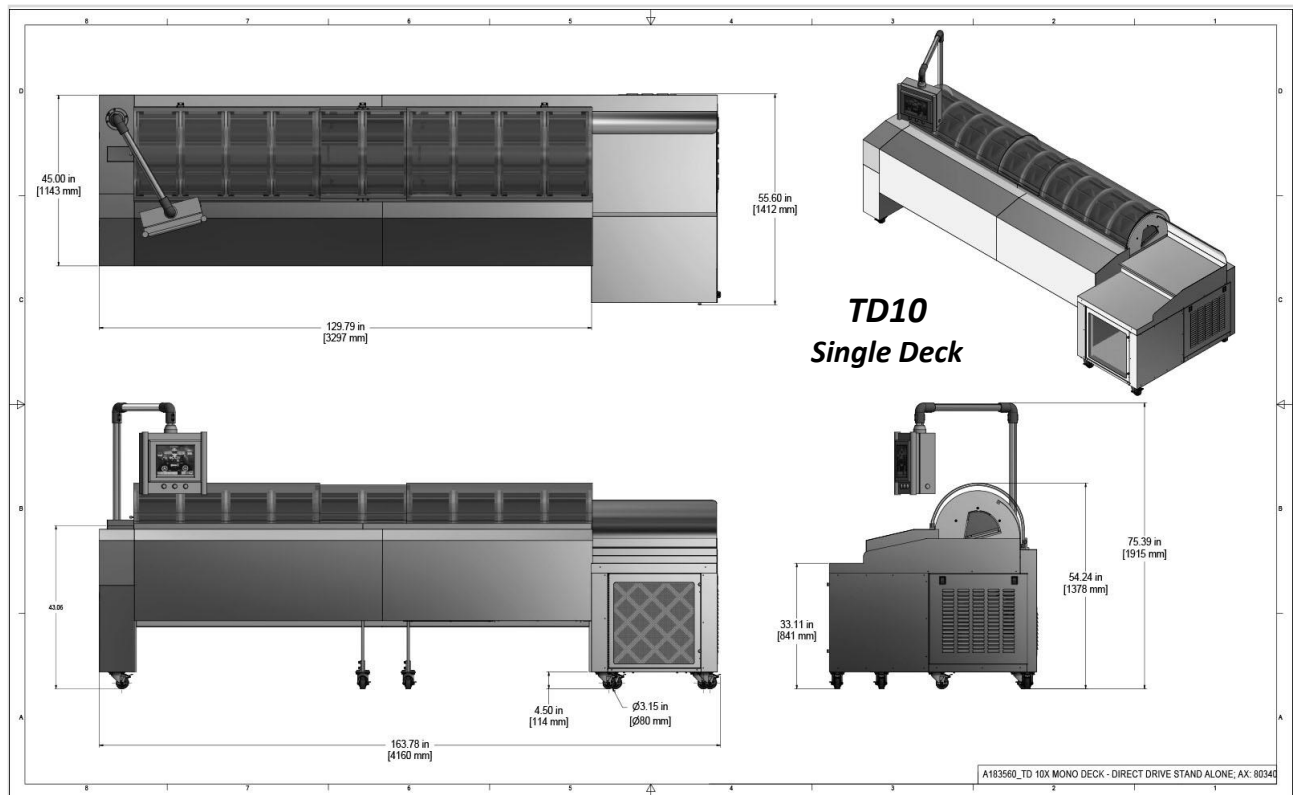
Highlights

- PLC is incorporated within the standalone unit.
- One variable speed direct drive electrical motor rotates the baskets.
- Programmable drying and capsule transfer time.
- Pneumatic actuated doors allow capsules to be transferred throughout the tumbler. and be discharged at the end of the drying cycle.

Soft Gel Tumble Dryer

TD10 Model

Specifications



Soft Gel Tumble Dryer

TD10 Model

| Model No. | |
|--|--|
| TD10 | Soft Gel Tumble Dryer – single deck |
| Specifications | |
| Compressed Air | 8 Bar |
| Machine TD Electrical Power | 12KVA without heaters |
| TD10 Dimensions (mm/inches) | 4160mmW x 1412mmD x 1378mmH (mm) / 163.78" W x 55.60" D x 54.24" H (inches) |
| Weight | 1450kg (3197 lbs.) |
| Model No. | |
| TD10 - Double Deck | Soft Gel Tumble Dryer – double deck |
| Specifications | |
| Compressed Air | 6 Bar |
| Machine TD Electrical Power | 12KVA without heaters |
| Unit Size | Smaller footprint, allowing for flexible layout configurations/positioning |
| TD10 – Double Deck Dimensions (mm/inches) | 2205mmW x 1234mmD x 1718mmH (mm) / 86.8" W x 48.6" D x 67.6" H |
| Weight | 870kg (1918 lbs.) |

TECHNOPHAR

Technophar Global Headquarters

www.technophar.com

Updated: Dec. 2025
Copyright Technophar ©2025