

Soft Gel Tumble Dryer

TD24 Model



Soft Gel Tumble Dryer

TD24 Model

Technophar's tumble dryers are offered as a standalone unit or in combination with our encapsulation machines. The **TD24 Model** is UL or CE certified, with FDA approved material, contact parts and fulfills cGMP standards of the pharmaceutical industry. Variable speed, high frequency blower, automatic capsules transfer, built in gentle heating, and more production parameters are set using a Programmable Logic Controller with touchscreen. Light-weight baskets allow for quick changeovers, easy clean up, and inspection.

Features

- Allows longer drying time, thus extracting more water from the capsules, and reducing the Drying Tunnels' drying time - compare with the one row and less baskets Tumbler dryer model.
- Anodized aluminum frame and stainless-steel covers with number 4 finish for fast, thorough cleaning.
- Maximum basket load - 12 kg.
- Built-in heating available upon request, allowing for gentle heating of specific products.
- Tumbler dryers are offered as standalone units or in combination with Technophar machines.
- Light-weight baskets with stainless-steel perforated plate allow for quick changeovers, easy clean-up, and inspection.
- Lightweight, simple to install, clear Lexan covers.
- Easy lubrication from the side of the machine.
- Discharge Conveyor allows transferring the capsules from the Tumbler Dryer to the Spreading Table.
- Blower for transferring the capsules from the Encapsulation Machine to the Tumbler Dryer available.

Mechanism

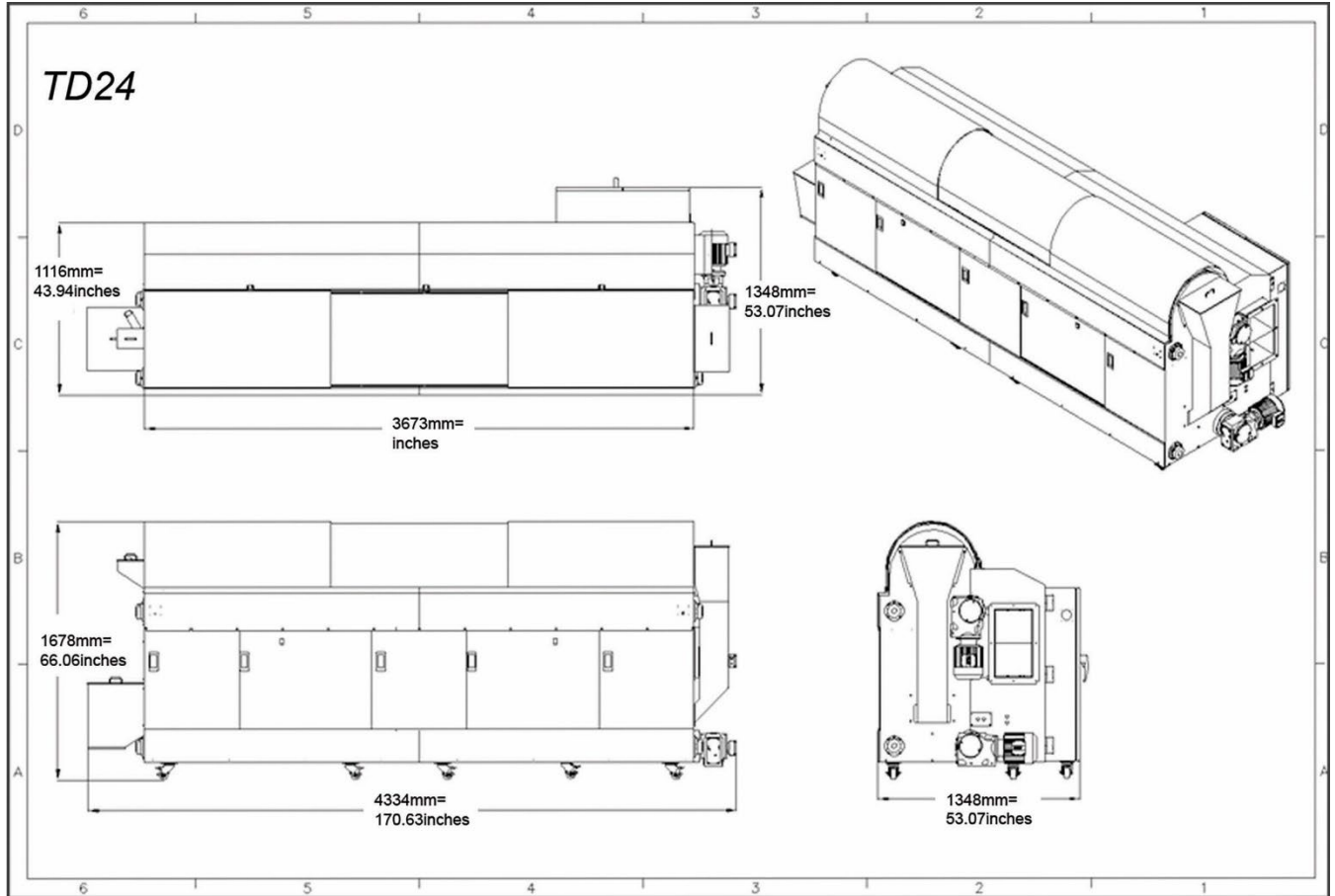
Highlights

- Electrical panel and PLC incorporated within the standalone unit.
- Two (2) variable speed direct drive electrical motors rotate the baskets.
- Pneumatic actuated doors allow capsules to be transferred throughout the tumbler and be discharged at the end of the drying cycle.
- Programmable drying and capsule transfer time.

Soft Gel Tumble Dryer

TD24 Model

Specifications



Model No.	
TD24	Soft Gel Tumble Dryer - Double Deck
Specifications	
Compressed Air	8 Bar
Machine TD Electrical Power	14KVA without heaters
Dimensions (mm/inches)	4334mmL x 1348mmW x 1678mmH (mm) / 170.63" L x 53.07" W x 66.06" H (inches)
Weight (kg/lb)	(2500kg/ 5512 lbs)

TECHNOPHAR

Technophar Global Headquarters

www.technophar.com

Copyright Technophar ©2022

2022-01-18 rev.