



Soft Gel Tumble Dryer

TD24 Model



Soft Gel Tumble Dryer

TD24 Model

Technophar's tumble dryers are offered as a standalone unit or in combination with our encapsulation machines. The **TD24 Model** is UL or CE certified, with FDA-approved material, contact parts, and fulfils cGMP standards of the pharmaceutical industry. Variable speed, high-frequency blower, automatic capsule transfer, built-in gentle heating, and more production parameters are set using a Programmable Logic Controller with a touchscreen. Light-weight baskets allow for quick changeovers, easy clean-up, and inspection.

Features

- Allows longer drying time, thus extracting more water from the capsules, and reducing the Drying Tunnels' drying time - compare with the one-row and fewer baskets tumble dryer model.
- Anodized aluminum frame and stainless-steel covers with number 4 finish for fast, thorough cleaning.
- Basket load capacity recommended from 12 kg (26lbs) to 15 kg (33lbs).
- Built-in heating available upon request, allowing for gentle heating of specific products.
- Tumble dryers are offered as standalone units or in combination with Technophar machines.
- Lightweight baskets with stainless-steel perforated plate allow for quick changeovers, easy clean-up, and inspection.
- Lightweight, simple to install, clear Lexan covers.
- Easy lubrication from the side of the machine.
- Discharge Conveyor allows transferring the capsules from the Tumble Dryer to the Spreading Table.
- Blower for transferring the capsules from the Encapsulation Machine to the Tumble Dryer available.
- UL or CE certified, with FDA-approved material, contact parts, and fulfils cGMP standards.

Mechanism

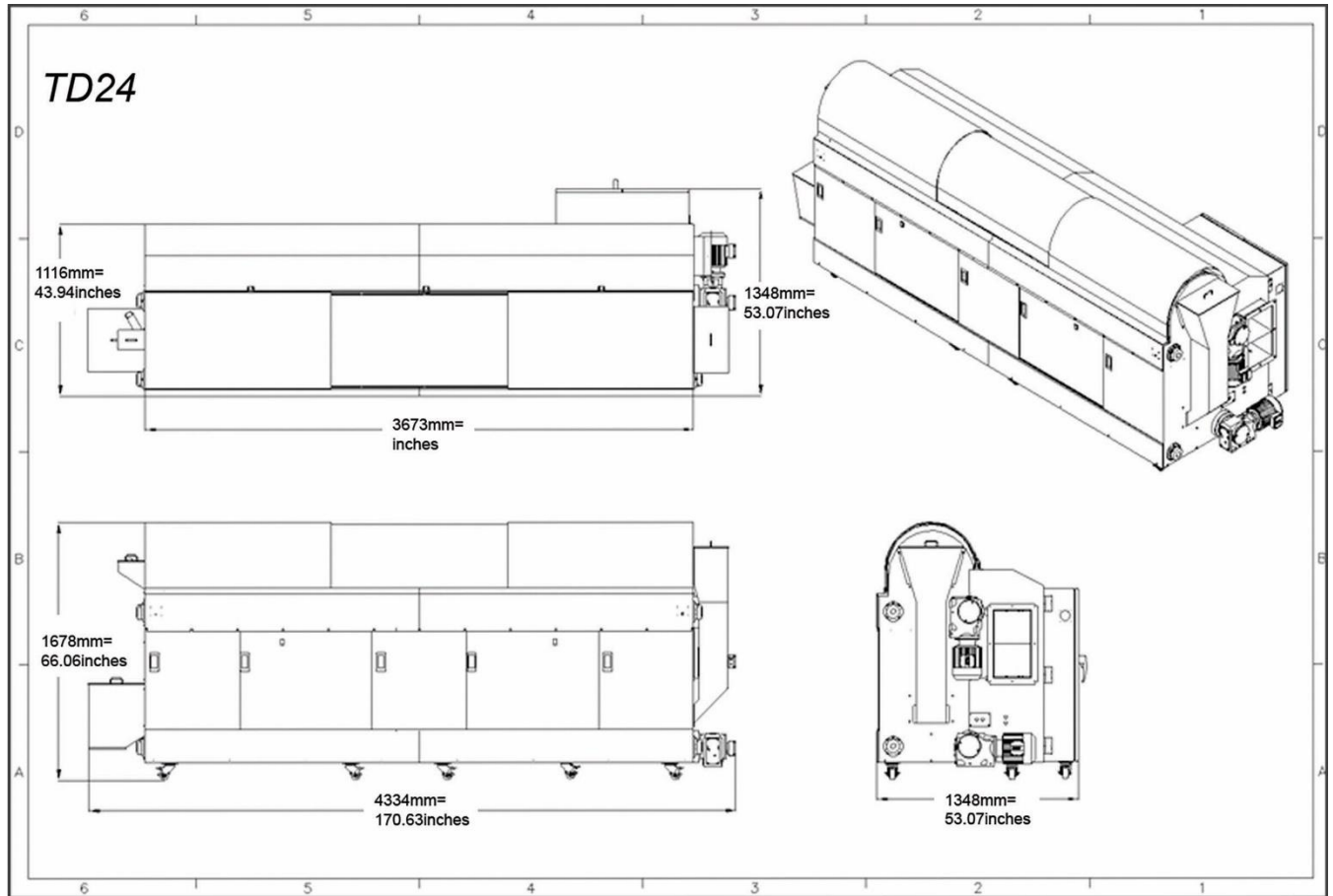
Highlights

- Electrical panel and PLC incorporated within the standalone unit.
- Two (2) variable speed direct drive electrical motors rotate the baskets.
- Pneumatic actuated doors allow capsules to be transferred throughout the tumbler and discharged at the end of the drying cycle.
- Programmable drying and capsule transfer time.

Soft Gel Tumble Dryer

TD24 Model

Specifications



Model No.	
TD24	Soft Gel Tumble Dryer - Double Deck
Specifications	
Compressed Air	8 Bar
Machine TD Electrical Power	14KVA without heaters
Dimensions (mm/inches)	4334mmL x 1348mmW x 1678mmH (mm) / 170.63" L x 53.07" W x 66.06" H (inches)
Weight (kg/lb)	(2500kg/ 5512 lbs.)

TECHNOPHAR

Technophar Global Headquarters

www.technophar.com

Updated: Feb. 2026

Copyright Technophar ©2025