

Soft Gel Polisher

CPP Model



- ✓ TUMBLER BASKET CAPACITY UP TO 120KG OF CAPSULES PER LOAD
- ✓ IMPROVED EFFICIENCY TO MATCH YOUR OUTPUT REQUIREMENTS WITH MINIMAL DOWNTIME
- ✓ ROBUST STAINLESS BUILT WITH SEALED CONSTRUCTION TO PREVENT CROSS-CONTAMINATION
- ✓ MEETS cGMP STANDARDS



Softgel Polisher

CPP Model

The **CPP Soft Gel Polisher** is ideal for the final finishing stages of soft gel capsule production in both the pharmaceutical and nutraceutical industries. This flexible capsule polishing machine offers a larger capacity for improved efficiency with options to meet your output capacity performance up to 120kg per load. Its robust stainless-steel build includes a fully sealed construction. This helps prevent leakage and contamination to ensure a long lifespan of the model and decreased production downtime. Model meets cGMP requirements.

Features

- Capable of polishing soft gel capsules and can be operated in two modes: Manual or Automatic.
 - Both modes can be combined if required at individual times as semi-automatic.
- The basket can be operated in forward or reverse mode.
- Stack light and alarm buzzer to prompt the operator when the cycle is completed, including any other faults like basket motor.
- Tried and tested belt and gear drive for minimal downtime.
- Reset button will start the cycle from the beginning once pressed.
- The basket lifting cover operates in safety conditions.
- Tumbler basket capacity: up to 120Kg or soft gel capsules.
- Sealed construction to prevent leakage and subsequent contamination.
- Aluminum frame construction prevents any possible rust and allows easy cleaning and maintenance.
- Outer covers made completely from stainless steel, designed according to GMP/FDA requirements.
- Easy access for set up and cleaning operations.
- Electrical panel incorporated within the machine.
- No special electrical connections are required.
- Plug and play.
- Portable for convenience.

Mechanism

- A variable-speed electrical motor rotates the basket using a combination of belt and plastic gear transmission.
- The capsules are evacuated by changing the directional rotation of the basket.
- A pneumatic cylinder assists the removal of the basket for cleaning.

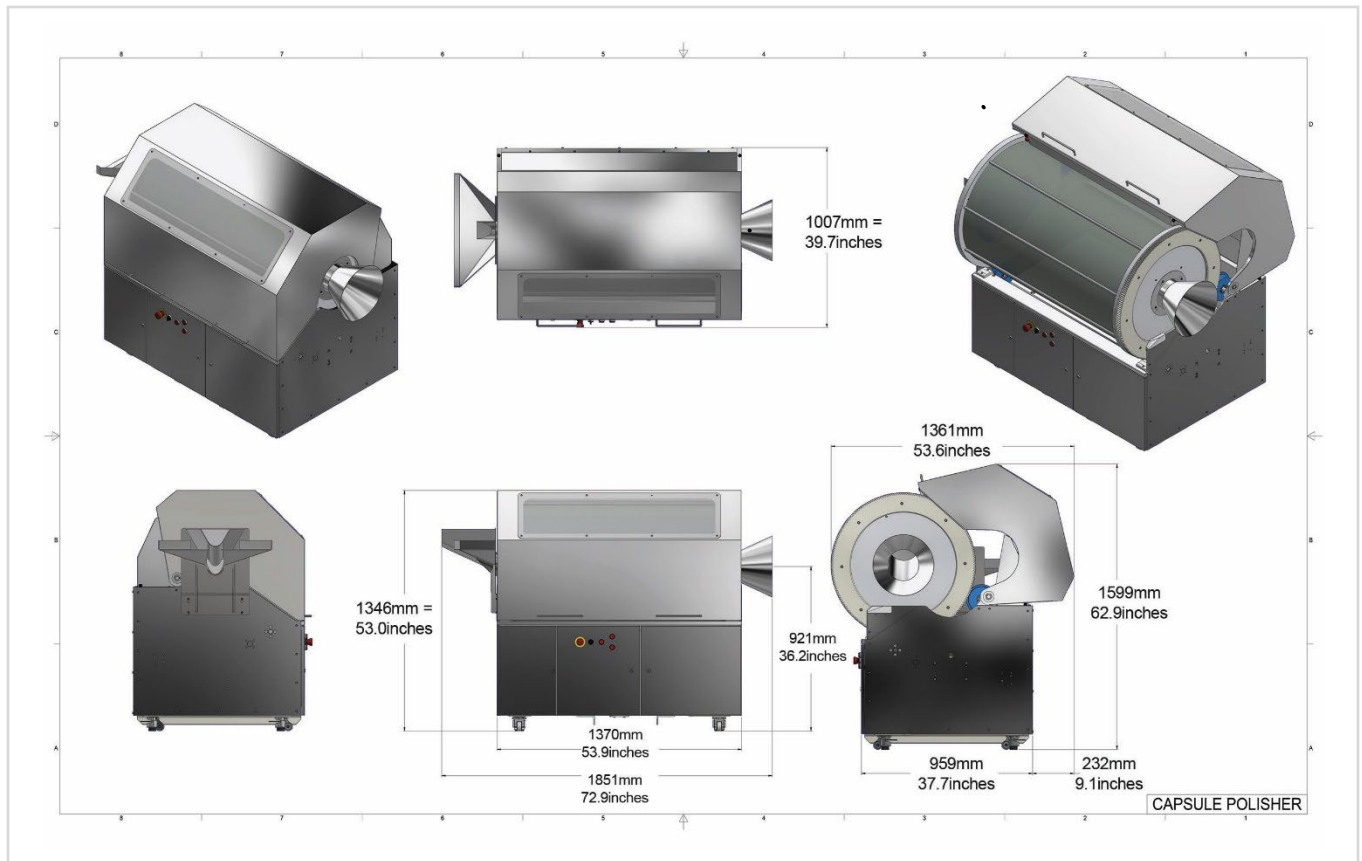
Softgel Polisher

CPP Model

Specifications

Soft Gel Polisher

Units of Measure: mm/inches



Model No.	
CPP	Soft Gel Polisher
Specifications	
Capacity	Up to 120kg
Dimensions (mm/inches)	1851mmL x 1599mmH x 1361mmW (mm) / 72.9"L x 62.9"H x 53.6"W (inches)
Weight (kg/lbs)	500kg / 1102 lbs

TECHNOPHAR

Technophar Global Headquarters

www.technophar.com

Copyright Technophar ©2021

2022-01-11rev.