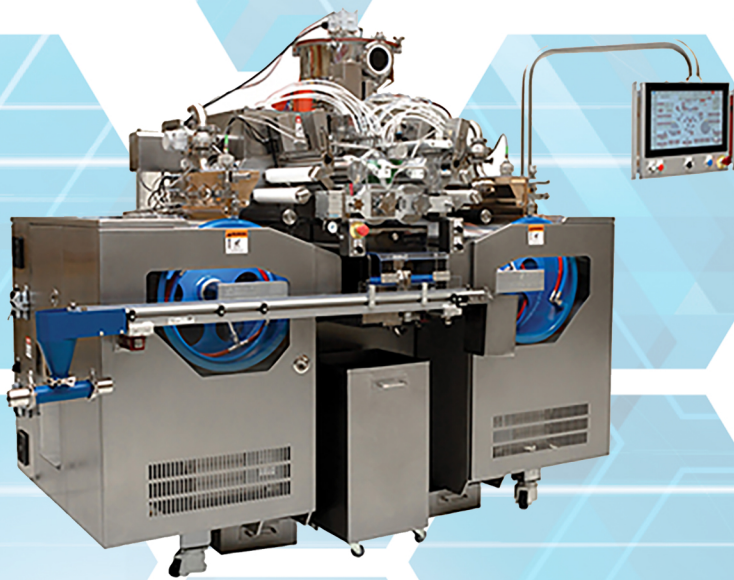


BROCHURE PACKAGE 2023



Services

- SOFTGEL EQUIPMENT
- AUXILIARY EQUIPMENT
- TOOLING & SPARE PARTS
- TURNKEY SOLUTIONS
- F.A.T. & ONSITE TESTING
- SPECIALIZED TRAINING



SERVICE & SOLUTIONS



✓ **TECH CONSULTATION & ONLINE SUPPORT SERVICE**

- SMART Troubleshooting via our online VPN Service
- FAT (Factory Acceptance Testing)

✓ **ANCILLARY EQUIPMENT SUPPORT**

- Spare Parts etc.

✓ **PREVENTIVE & MAINTENANCE SOLUTIONS**

✓ **TRAINING & COACHING**

- Installation

Technophar Equipment & Service

Service & Solutions

Technophar Equipment & Service

We have been a pioneer in the soft gel manufacturing industry since its inception. With over 30 years of experience, we continue to be leaders at the forefront of the industry providing expertise, excellent service, and support. Our goal is to ensure customers receive the level of satisfaction they deserve through all stages of the manufacturing process from installation, material preparation, encapsulation, drying, cleaning, and sorting to final packaging.

From a single standalone unit to a more complex machine, our experts are here to assist and help determine the right hardware for your requirements. Whether it's for short-term and long-term goals or more complex design challenges, our engineering team can assist with a wide variety of solutions from product development, and design, to the planning stages. Comparing equipment, pricing options, and planning your facility can be quite time-consuming and require a significant amount of time and money. Turnkey services will help guide you through operational plans and ease the burden of these associated costs. If maximizing efficiency and productivity is one of your priorities, then turnkey solutions might be the right option for you.

As a supplier, we are not only confident in the quality and workmanship of our machines, but we genuinely care about your production process, which is why we offer preventative maintenance support and training. We want to give you the tools you need to succeed. Should day-to-day challenges arise from running a production facility, our technicians and online support services are available to assist with troubleshooting or tackling any issues.

As a global supplier, we continue to grow our business through optimism and building long-term partnerships. We welcome your feedback and look forward to working with you.

CONTACT INFORMATION:	
Head Office (Canadian Headquarters)	Tel: (519) 946-0800
Inquiries	inquiries@technophar.com

**CONTACT US TODAY FOR SERVICE INQUIRIES
OR TO REQUEST A SERVICE QUOTE**

TECHNOPHAR

Technophar Global Headquarters

www.technophar.com

Copyright Technophar ©2022

2022-01-26 rev.


technophar
A QUALICAPS COMPANY

SoftGel Capsule Machines

SGL207NextGen - Pilot Scale



www.technophar.com

Pilot Scale Soft Gel Machine

SGL207NextGen

This “Pilot Scale” soft gelatin machine has an operational speed of up to 5 RPM, 4 medicine plungers, and electronic gearing using servo motors. Its robust construction meets cGMP requirements. PLC and touchscreen provide more reliable control over production and process parameters for improved accuracy. Its design assists with easy cleaning, maintenance, assembly, and convenient changeover. It can be integrated with dryers, polishers, chilling systems, etc. Suitable for R&D, laboratories, nutraceutical industries, cannabis, and other facilities.

Features

- Pilot-scale soft gelatin machine.
- Motion Control System: the most important mechanical gearing replaced with electronic gearing in synchronized loops, using servo motors.
- Die Roll dimensions: approximately 4” x 3”.
- Operation speed – 0.5 – 5RPM.
- Control of all production and process parameters using Allen Bradley® programmable Logic Controllers (PLC) with touchscreen.
- Electrical panel and PLC incorporated within the machine.
- Sealed construction to prevent any possible rust and allows easy cleaning and maintenance.
- The outside covers of the machine are completely made from stainless steel, designed according to the GMP/FDA requirements.
- CFR 21 Part 11 compliance software.

Mechanism

Medicine Pump System

- The medicine pump is independently driven by a servo motor and electronically synchronized with the die rolls.
- During a capsule size change, the operator inputs the number of die roll cavities using the touchscreen, and the medicine pump timing is done electronically (no gear change is required).
- Precise injection timing adjustments are done electronically using the touchscreen; The timing can also be adjusted during operation, without stopping the machine. Since the timing can also be adjusted with such high accuracy, this improves on seal integrity of the capsule, which will increase capsule quality.
- The slide lubrication system for the pump is integrated into the drive mechanism.
- Four plunger standard pump.

Spreader Box

- Adaptable gelatin ribbon width that allows a minimum loss of ribbon net.
- Bronze construction.
- Gelatin level control is done electronically for gravity feeding from individual attached tanks; ground level gelatin feeding is also available, using a pressurized gelatin tank (optional).

Casting Drums

- “In-line” construction allows a straight gelatin ribbon transfer to the oil rolls and die rolls without any twisting.
- Water/Air cooled cast drums.

Pilot Scale Soft Gel Machine

SGL207NextGen

Ribbon Lubrication & Drive System

- Porous material for lubrication roller.
- Electronic metering pump and a precise distributor valve allow accurate ribbon lubrication.
- Easy and accurate oil quantity adjustment.
- Independent electrical drives allow fine adjustments of the ribbon tension on each side.
- Easy access from the operator's side to feed the ribbon on the oil rollers.

Mechanism

Die Roll Pressure System

- Manually operated pneumatic valves for high and low pressure.

The Divider (Chute Assembly)

- Variable speed independent drive.
- Sealed construction.

Mangle Rolls

- Electronic speed adjustment allows fine-tuning of the ribbon tension and helps in the cutting process.

Wedge Lifting System

- Air-actuated lifting with a safe middle position of the injection wedge.

Machine Lubrication

- Closed lubrication system with a dedicated pump for the Die Roll housing.

Soft Capsule Transfer Conveyor

- Variable speed drive motor.
- Bi-directional.

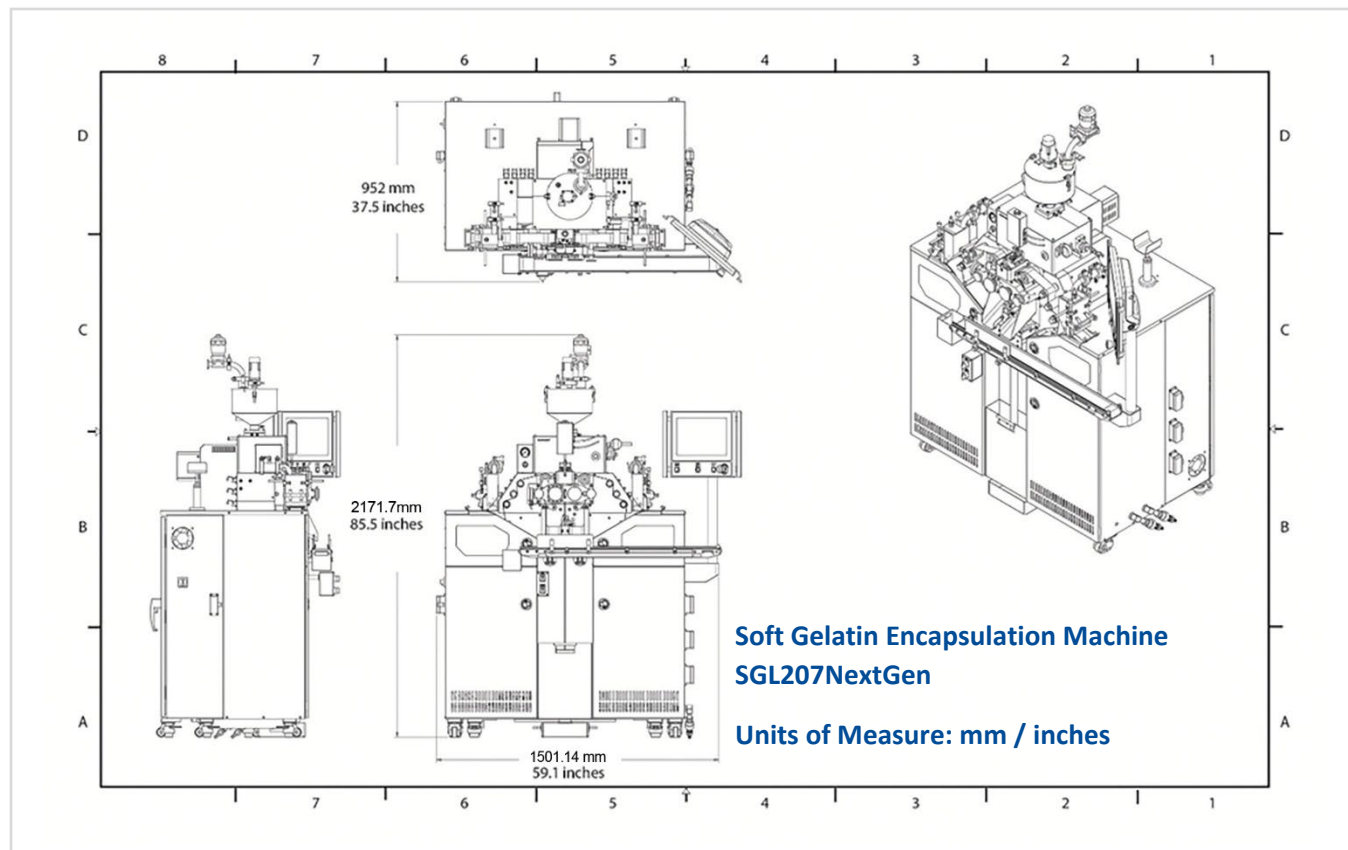
Set of aluminum die rolls (4" x 3") and change parts

- Specially coated injection wedge.
- Storage case.
- Die size – per customer requirements.

Pilot Scale Soft Gel Machine

SGL207NextGen

Specifications



Model No.	
SGL207NextGen	Soft Gel Capsule Machine Next Gen – 5RPM
Specifications	
Dimensions (mm/inches)	1501.14mmL x 952mmW x 2171.7mmH (mm) / 59.1" L x 37.5" W x 85.5" H x (inches)
Weight (kg/lb)	900 kg / 1984 lbs
Machine Electrical Power	15 KVA
Compressed Air	100 PSI
Chilled Water	3.8 GPM

TECHNOPHAR

Technophar Global Headquarters

www.technophar.com

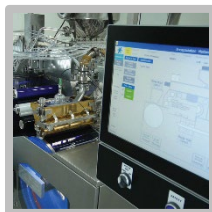
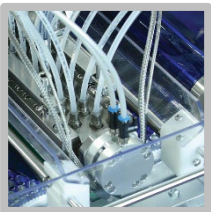
Copyright Technophar ©2023

2023-01-18rev.


technophar
A QUALICAPS COMPANY

Commercial Scale Soft Gel Machine

SGM612NextGen[®]



Commerical Scale Soft Gel Machine

SGM612NextGen®

The new generation **SGM612NextGen®** model upgrades to the latest technology using servo motor. Its easy-to-use control system uses PLC and touchscreen, allows for ease of operation and productivity. Furthermore, its modular modern design improves part changeovers timing, maintenance, and cleaning to help prolong the life of the machine. This standalone unit can be easily integrated with current soft gel processing equipment. Our soft gel machines are suitable for laboratories, research institutions, food factories, nutraceutical facilities, and other related industries.

Features:

- **Motion Control System:** the mechanical gearing replaced with electronic gearing (implemented with closed loop control systems) using servo motors.
- **Operational Speed:** up to 8 RPM. Nominal production speed 6 RPM.
- **Die Roll Dimensions:** Approximately 6" x 12".
Left and right casting drums have independent control that could be adjusted on-the-fly (during production) by electronically changing the gear ratio between the drums and dies.
- Convenient installation, energy efficient and high productivity.
- All Technophar soft gel encapsulation machines meet cGMP standards and related guidelines.

Construction:

- Sealed construction to prevent leakage and subsequent contamination.
- Aluminum frame construction prevents any possible rust and allows for easy cleaning and maintenance.
- The outside covers of the machine are completely made from stainless steel, designed according to the GMP/FDA requirements.
- Improved serviceability as most of the interior components slide out for easier access.

Control Panel:

- Control of all production and process parameters using safety PC based control system (embedded PC with technology and safety integrated).
- PC based visualization system (IPC with run-time software and industrial monitor).
- Electrical panel and PLC incorporated within machine.
- Control of all production and process parameters using Programmable Logic Controllers (PLC) with touchscreen.
- Reduced spacing requirements and carbon footprint.
- FDA 21 CFR Part 11 Software compliance.

Mechanism

Medicine Pump System

- The medicine pump is independently driven by a servo motor and electronically synchronized with the Die Rolls.
- During a capsule size change the operator inputs the number of Die Roll cavities using the touch screen.
- The medicine pump timing is done electronically.
- Precise injection timing adjustments are done electronically using the touch screen. The timing can also be adjusted during production (without stopping the machine). Since this timing can be adjusted with such high accuracy it improves on seal integrity of the capsule. This in turn increases capsule quality and productivity.

Commerical Scale Soft Gel Machine

SGM612NextGen®

- The medicine pump is placed in a special housing which is completely separated from the medicine pump drive system. This allows quick change over and easy maintenance.
- The slide lubrication system for the pump is an electronic pump located inside the machine. It is separated from the medicine pump drive system (GMP construction, no cross contamination of drive system with fill material).
- Twenty (20) plunger medicine pump standard.
- Mini medicine pump: Thirty (30) plungers and maxi medicine pump twenty (20) plungers available.
- Main work area (Die Rolls) situated 70 mm lower than previous generation machine.

Die Roll Housing

- Two (2) independent Die Roll shafts driven by two (2) servo motors electronically. synchronized, with high precision low backlash gearboxes.
- Fast and easy alignment of Die Roll shafts.
- No lubrication for Die Roll housing, leading to low maintenance cost.

Spreader Box

- Adaptable gelatin ribbon width that allows minimum loss of ribbon net.
- Bronze construction.
- Gelatin level control is done electronically for gravity feeding. (Ground level gelatin feeding also available).

Casting Drums

- "In-line" construction allows a straight gelatin ribbon transfer to the Oil Rolls and Die Rolls without any twisting.
- Cooling drums allow a high efficiency cooling at high speed.
- Water and air-cooling system incorporated in machine.

Ribbon Lubrication & Drive System

- Porous material for lubrication roller.
- Four electronic metering pumps allow a very accurate ribbon lubrication.
- Easy and accurate oil quantity adjustment.
- Independent electrical drivers allow fine adjustments of the ribbon tension on each side.
- Easy access from the operator side to feed the ribbon on the Oil Rolls.

Die Roll Pressure System

- Electronic control of the pneumatic system.
- The Divider (Chute Assembly).
- Variable speed independent drive.
- Sealed construction.

Mangle Rolls

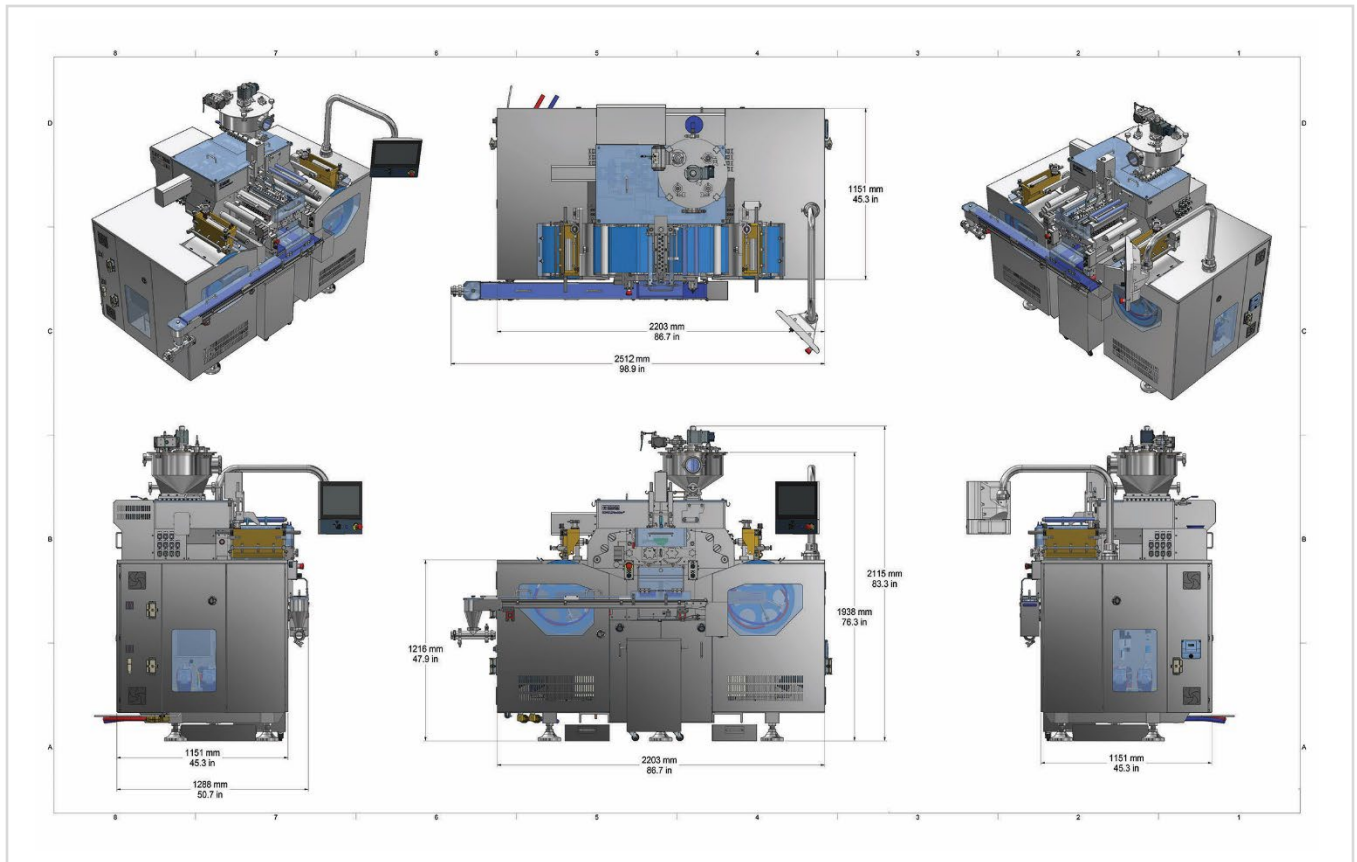
- Pneumatic cylinders for mangle roll pressure are used for ease of operation and maintenance.
- Electronic speed adjustment allows fine tuning of the ribbon tension and helps in the cutting process.

Commerical Scale Soft Gel Machine

SGM612NextGen®

Specifications

Soft Gelatin Encapsulation Machine SGM612 NextGen
Units of Measure: mm/inches



Model No.	
SGM612NextGen®	Commercial Scale Soft Gel Capsule Machine
Specifications	
Dimensions (mm/inches)	2512mmW x 1151mmD x 2115mmH (mm) / 98.9" W x 45.3" D x 83.3"H (inches)
Die Roll Dimensions (mm/inches)	150mm Ø x 300mm Lg / 5.91 inches Ø x 11.81 inches
Drum Diameter (mm/inches)	506mm/ 19.92 inches
Compressed Air	100 PSI
Chilled Water	6 GPM, 7°C
Electrical Power	Max. 75 KVA
Weight (kg/lbs)	Approx. 2400kg/ 5292 lbs Machine

TECHNOPHAR

Technophar Global Headquarters

www.technophar.com

Copyright Technophar ©2022

2023-01-17 rev.

Hard Gelatin Capsule Machine

7D2A 2-Deck Elongated Model



Hard Gelatin Capsule Machine

7D2A 2-Deck Elongated Model

Efficient Hard Gel Capsule Drying

The 7D2A 2-Deck TES elongated model has been designed to provide automated capsule filling capabilities for Hard Gel Capsules. Designed to provide high efficiency for production scale use meeting GMP standards for both pharmaceutical and nutraceutical industries.

The system consists of:

- Two deck machine: Upper Deck: 30 tables
 Lower Deck: 25 tables
- Control of all production and process parameters using high-tech control panel.
- Very easy and flexible operation using a Programmable Logic Controller (PLC) with touchscreen.

Features:

- Two sets of automatics.
- Dipping 7-bars.
- 28 bars on table.
- Pinbar requirements: 3,208 pieces for 7-bar dipping.
- Machine speed: up to 50 bars/minute (dry run).
- Machine output: up to 90,000 capsules/hour (depending on capsule size)

Model No.	
7D2A-2-DECK-TES	Two-Deck Elongated Hard-Gelatin Machine
Specifications	
Dimensions (mm/inches)	18,609.06mmL x 1651mmW x 2297.18mmH(mm) / 732.64" L x 65" W x 90.44" H (inches)
Weight (kg/lb)	Approx. (9797.59 kg / 21,600lbs)

TECHNOPHAR

Technophar Global Headquarters

www.technophar.com

Copyright Technophar ©2022 2022-01-18rev.

Hard Gelatin Capsule Machine

Two-Deck Elongated Model



Hard Gelatin Capsule Machine

HCM-Two-Deck Elongated Model

Efficient Hard Gel Capsule Drying

The HCM two-deck TES elongated model has been designed to provide high-efficiency for production scale use meeting GMP standards for both pharmaceutical and nutraceutical industries.

The system consists of:

- Control of all production and process parameters using high-tech control panel.
- Very easy and flexible operation using a Programmable Logic Controller (PLC) with touchscreen.

Features:

- Dipping 6 or 7 bars.
- 24 or 28 bars on table.
- Two-deck machine (elongated with 4 tables).
- Upper Deck: 24 tables and Lower Deck: 21 tables
- Pin bar requirements: 2,270 pieces for 6-bar dipping, or 2,648 pieces for 7-bar dipping.
- Machine speed: up to 44 bars/minute (dry run).
- Machine output: up to 65,000 capsules/hour (depending on capsule size).
- Water requirements: purified—3/8" diameter line.

Model No.	
2-DECK-TES	Two-Deck Elongated Hard-Gelatin Machine
Specifications	
Compressed Air	100PSI – ¼" Diameter Line
Dimensions (mm/inches)	15,322.55mmL x 1651mmW x 2297.18mmH (mm)/ 603.25" L x 65" W x 90.44" H (inches)
Weight (kg/lb)	Approx. (8572.90 kg /18,900 lbs)
Machine Electrical Power	60kW, 3ph., Local Voltage

TECHNOPHAR

Technophar Global Headquarters

www.technophar.com

Copyright Technophar ©2022

2022-01-18 rev.

Auxiliary Equipment

CPP Model - Soft Gel Polisher



- ✓ TUMBLER BASKET CAPACITY UP TO 120KG OF CAPSULES PER LOAD
- ✓ IMPROVED EFFICIENCY TO MATCH YOUR OUTPUT REQUIREMENTS WITH MINIMAL DOWNTIME
- ✓ ROBUST STAINLESS BUILT WITH SEALED CONSTRUCTION TO PREVENT CROSS-CONTAMINATION
- ✓ MEETS cGMP STANDARDS



Softgel Polisher

CPP Model

The **CPP Soft Gel Polisher** is ideal for the final finishing stages of soft gel capsule production in both the pharmaceutical and nutraceutical industries. This flexible capsule polishing machine offers a larger capacity for improved efficiency with options to meet your output capacity performance up to 120kg per load. Its robust stainless-steel build includes a fully sealed construction. This helps prevent leakage and contamination to ensure a long lifespan of the model and decreased production downtime. Model meets cGMP requirements.

Features

- Capable of polishing soft gel capsules and can be operated in two modes: Manual or Automatic.
 - Both modes can be combined if required at individual times as semi-automatic.
- The basket can be operated in forward or reverse mode.
- Stack light and alarm buzzer to prompt the operator when the cycle is completed, including any other faults like basket motor.
- Tried and tested belt and gear drive for minimal downtime.
- Reset button will start the cycle from the beginning once pressed.
- The basket lifting cover operates in safety conditions.
- Tumbler basket capacity: up to 120Kg or soft gel capsules.
- Sealed construction to prevent leakage and subsequent contamination.
- Aluminum frame construction prevents any possible rust and allows easy cleaning and maintenance.
- Outer covers made completely from stainless steel, designed according to GMP/FDA requirements.
- Easy access for set up and cleaning operations.
- Electrical panel incorporated within the machine.
- No special electrical connections are required.
- Plug and play.
- Portable for convenience.

Mechanism

- A variable-speed electrical motor rotates the basket using a combination of belt and plastic gear transmission.
- The capsules are evacuated by changing the directional rotation of the basket.
- A pneumatic cylinder assists the removal of the basket for cleaning.

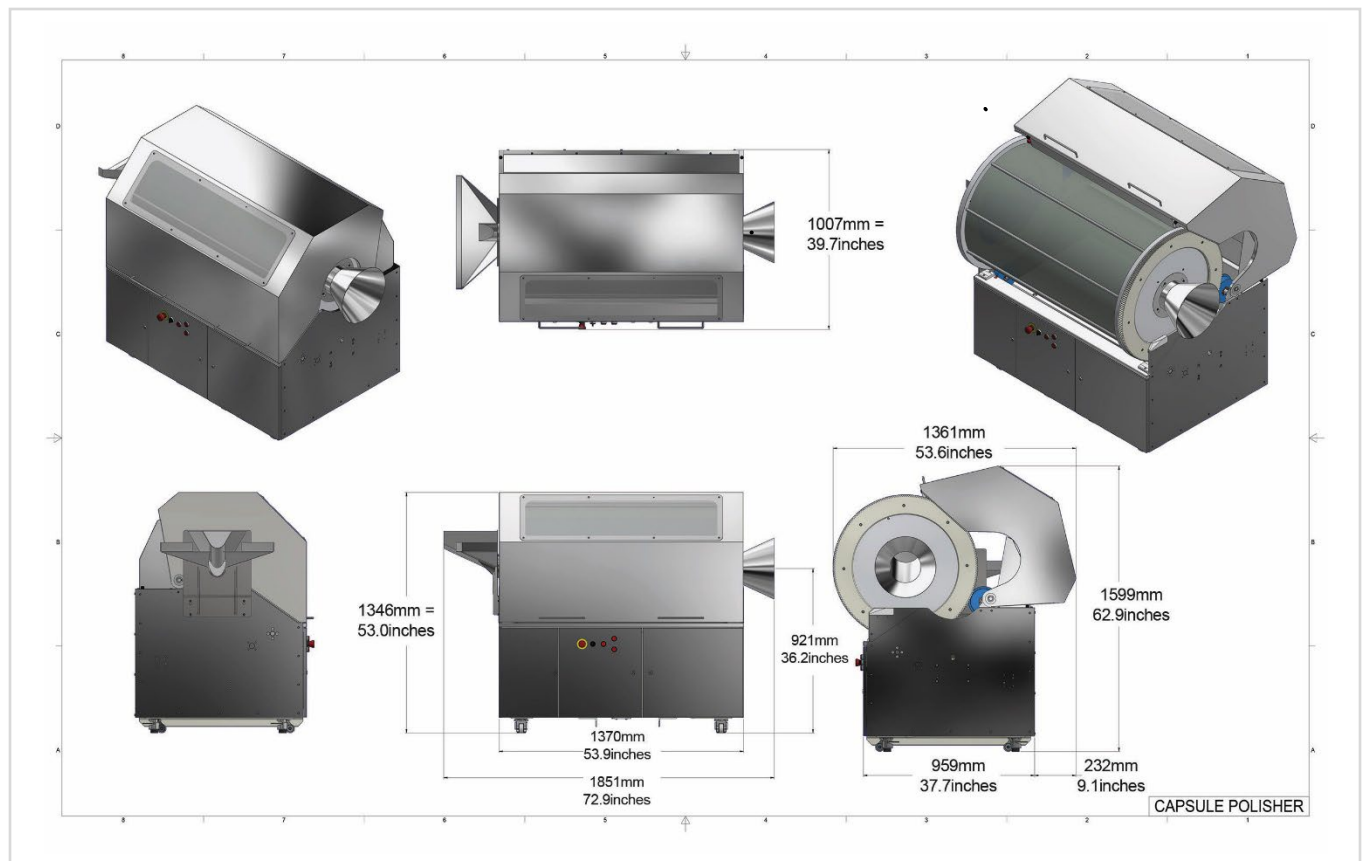
Softgel Polisher

CPP Model

Specifications

Soft Gel Polisher

Units of Measure: mm/inches



Model No.	
CPP	Soft Gel Polisher
Specifications	
Capacity	Up to 120kg
Dimensions (mm/inches)	1851mmL x 1599mmH x 1361mmW (mm) / 72.9"L x 62.9"H x 53.6"W (inches)
Weight (kg/lbs)	500kg / 1102 lbs

TECHNOPHAR

Technophar Global Headquarters

www.technophar.com

Copyright Technophar ©2021

2022-01-11rev.

Capsule Band-Sealing Machine

S2 MODEL



- ✓ PORTABLE
- ✓ PREVENTS COUNTERFEIT PRODUCTS
- ✓ IMPROVES SHELF-LIFE & PRODUCT DURABILITY
- ✓ MEETS cGMP STANDARDS
- ✓ DIFFERENTIATE YOUR PRODUCT'S BRAND

GMP
STANDARDS



Capsule Band-Sealing Machines

S2 Model

The **S-2 Model** utilizes the capsule banding process using commercially proven technology to securely seal the body and cap of two-piece hard-shell capsules. Sealing bands contribute to a more durable, shelf-stable product and help to differentiate your product's brand. The banding process is approved by the FDA for pharmaceutical products including prescriptions, OTCs' and has been used throughout the nutraceutical industry.

Features

- Single Unit Portable Capsule Sealing-Band Machine.
- Prevents the leakage of liquid fills.
- Reduces oxidation of the capsule contents.
- Demonstrates tamper-resistance to prevent counterfeit products.
- Newly designed top plate makes it easy to work inside the machine.
- Easy to clean top-plate and chain assembly by lifting the machine's lid.
- Exterior sensors replaced with smaller interior sensors.
- New in-line plate positioning creates a higher capacity with better and faster sealing.
- Newly simplified control panel.

Capsule Band-Sealing Machines

S2 Model

Mechanism

The S2 Model consists of:

EMERGENCY STOP Switch

- This two-position switch controls the motor's power and heater.

RUN Switch

- Starts the capsule slat drive motor.

ON-OFF Switch, Heater/Banding Wheel

- Starts and stops the heater/motor wheel. When the pilot light is on, the heater is powered on.

Temperature Control and Indicator

- When the gelatin pan is properly in position, the temperature controller will display the heat transfer fluid temperature. The controller is front-panel-adjustable from 0-500 degrees Fahrenheit.

Interlock, Tabletop Safety

- If the table is not down and in its proper operating position, the interlock prevents the operation of the slat drive chain.

Interlock, Gelatin Pan Heater Safety

- The interlock on the gelatin pan turns off the power to the gelatin pan heating element if the gelatin pan is not raised into the proper operating position.

Interlock, Removable Panel Safety

- The interlock on the front panel stops the operation of the slat drive chain if the front panel is not in the proper operating position.

Chain Speed Potentiometer

- The chain speed potentiometer controls the speed, up or down, of the chain motor.

Wheel Speed Potentiometer

- The banding wheel potentiometer controls the speed, up or down, of the sealer motor.

Capsule Band-Sealing Machines

S2 Model

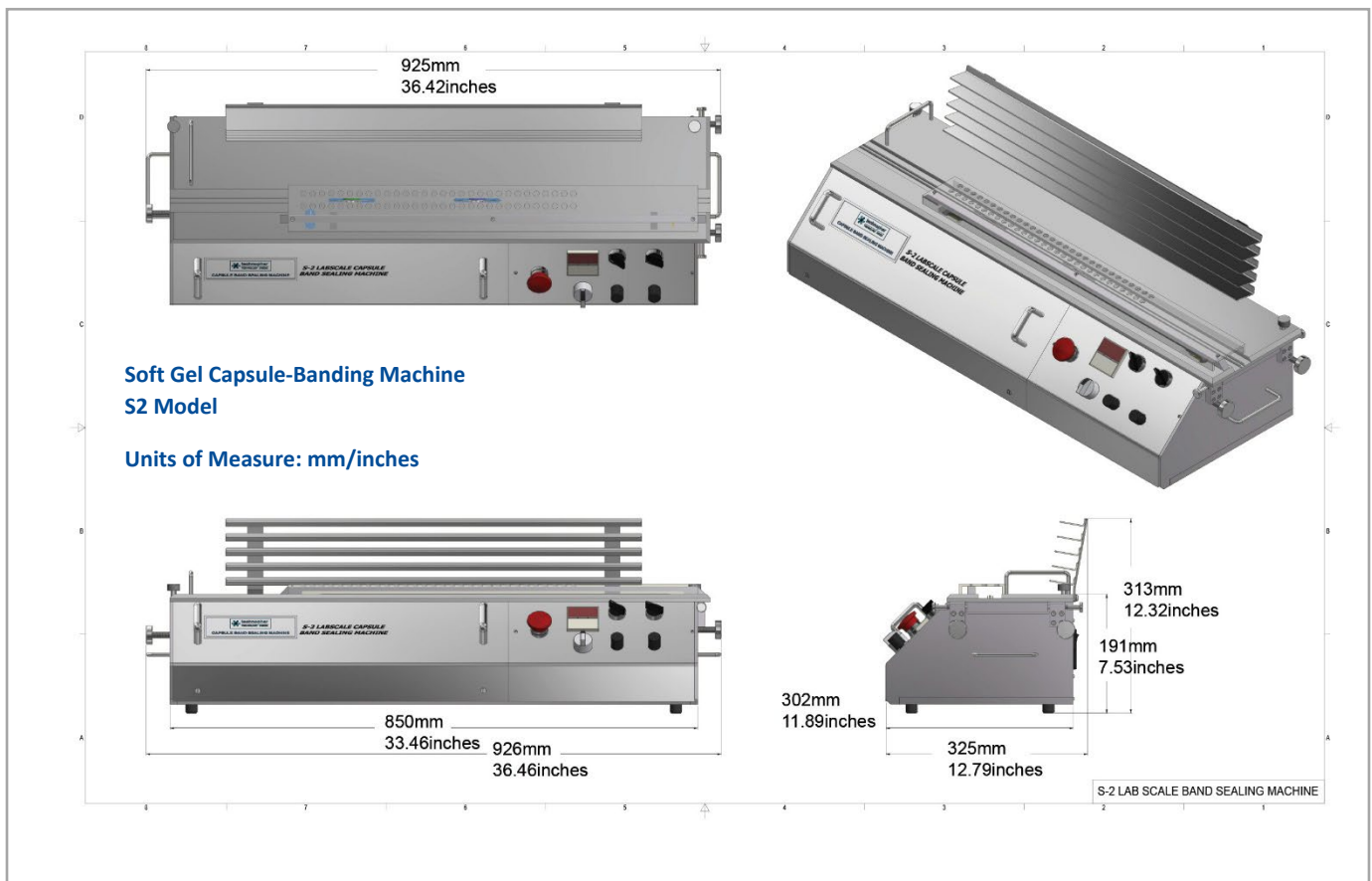
Two Points of Adjustment

- The first point of adjustment is vertical, which determines how much of the banding wheels will protrude through the tabletop. The amount of wheel protruding through the tabletop will determine the amount of banding solution that will be transferred to the capsule.
- The second point of adjustment is horizontal, which determines the position of the brand, with respect to the cap/body joint line.

Banding Wheel Assembly

The banding wheels transfer gelatin from the gelatin pan to the circumference of the hard gelatin capsules.

- Wheels are a matched set, as shown by their marking on the respective parts, and must not be interchanged.
- Wheels are to be assembled and installed so that the identification markings on the banding wheels face the front of the machine.



Capsule Band-Sealing Machines

S2 Model

Model No.	
S2 Model	Capsule Band-Sealing Machine
Specifications	
Machine Electrical Power	230 VAC, 50/60 Hz, 4 Amps
Dimensions (mm/inches)	926mmL x 325mmW x 313mmH (mm) / 36.46" L x 12.79" W x 12.32" H (inches)
Weight (kg/lb)	29.45kg/ 64.9lbs

TECHNOPHAR

Technophar Global Headquarters

www.technophar.com

Copyright Technophar ©2022

2022-01-18 rev.

Soft Gel Drying Tunnels

LDT Model



- ✓ LIGHT-WEIGHT, SELF SUPPORTING WALL MODULES FOR EASY ON-SITE ASSEMBLY
- ✓ CLASS 1 FIRE-RESISTANT MATERIALS
- ✓ MOIST-AIR TO DRY-AIR PATH HELPS PREVENT CAPSULE SKINNING
- ✓ SINGLE UNIT IS SIZED TO ACCEPT 14 STACKS OF SHALLOW DRYING TRAYS
- ✓ CUSTOMIZED DESIGN TO FIT YOUR PRODUCTION AND VOLUME REQUIREMENTS
- ✓ MEETS cGMP STANDARDS

Softgel Drying Tunnels

LDT

Technophar's Drying Tunnels have been designed to provide superior performance and offer the convenience of simple on-site assembly. Tunnels are provided in sub-assemblies that can easily be put together at your facility using the assembly equipment shipped with each tunnel. The LDT tunnels use Class 1 fire resistant materials that meet cGMP standards.

Features

- The tunnels are made of self-supporting walls using standard wall panels in a composite construction of two external skins of painted steel sheets or high-pressure plastic laminate, with a sealed and insulated interior of extruded Styrofoam. This is a Class 1 fire resistant material meeting cGMP requirements.
- The tunnels are supplied in components and subassemblies to be set and assembled on the client's floor using installation accessories included in Technophar shipment; technical assistance and supervision is provided by Technophar for the final installation.
- The tunnels are sized to accept up to 14 stacks of shallow drying trays.
- The number of tunnels is determined through calculation based on the output of the encapsulation machine and the type of product to be dried.

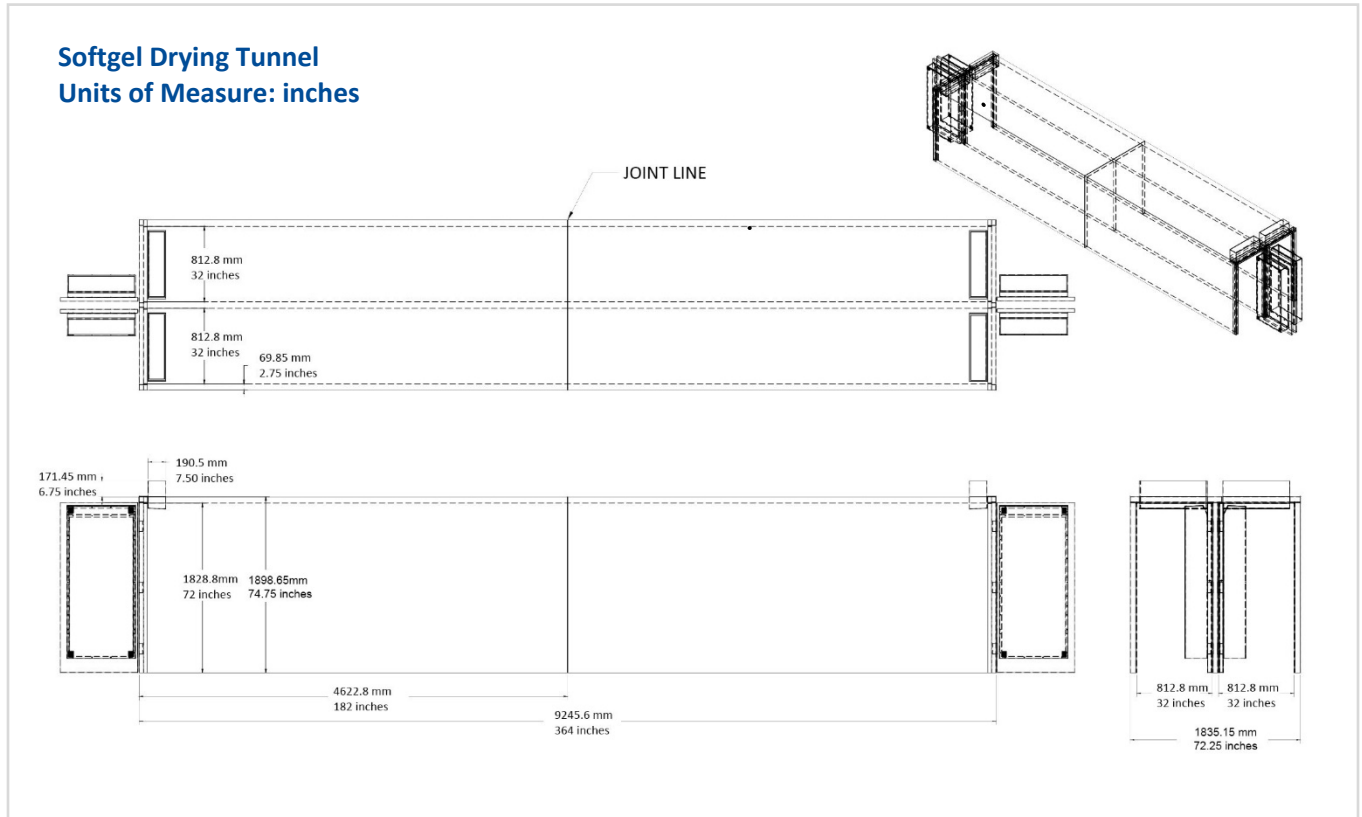
Mechanism

- In this application drying air is supplied to the tunnel at the exit end of the product and pulled out from the tunnel at the entry end of the products.
- The drying air is moving along the tunnel countercurrent to the product, accumulating moisture as it approaches the end of the tunnel; as such fresh product encounters moist air rather than dry air, preventing the skinning of the capsules. This helps ensure an efficient drying as the capsules move through the tunnel from moist to dry air as they exit the tunnel.

Softgel Drying Tunnels

LDT

Specifications



Model No.	
LDT	Drying Tunnels
Specifications	
Dimensions (mm/inches)	9245.6 L x 1898.65 H x 1835.15 W (mm) / 364" L x 74.75" H x 72.25" W (inches)

TECHNOPHAR

Technophar Global Headquarters

www.technophar.com

Copyright Technophar ©2022

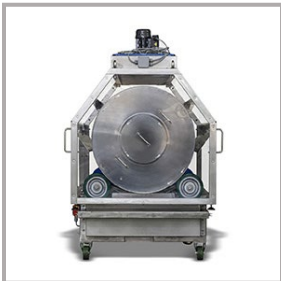
2022-01-18 rev.

Continuous Drying System

CDS Models



- ✓ COMPLETE DRYING SOLUTIONS FOR HIGH VOLUME
ENCAPSULATION MACHINES
- ✓ IMPROVE OPERATIONAL COSTS
- ✓ MAXIMIZE OUTPUT WITH UP TO 100KG CAPACITY
- ✓ EASY TO CLEAN & SEAMLESS CHANGEOVER
- ✓ MEETS GMP STANDARDS



Continuous Dryers

CDS Model

Technophar provides complete drying solutions for high-volume soft gel encapsulation machines. With a maximum output of 100kg, our machines provide even airflow for uniform soft gel capsule drying. With its energy-efficient design, you'll experience easy cleaning and seamless changeover improving energy efficiency and additional operational/labour costs. Designed to meet GMP standards delivering high-quality results.



CDS Continuous Mobile Drying System features:

- Stainless steel basket with plexi-cover and two fans for room air supply to the product
- Friction driven basket on 4 rollers
- Separate basket control for on/off, forward/reverse, e-stop and plug connection for power when transferred to drying area
- Unit on castors for easy movement
- Nominal basket speed 19RPM
- Maximum load 100kg (220lbs)

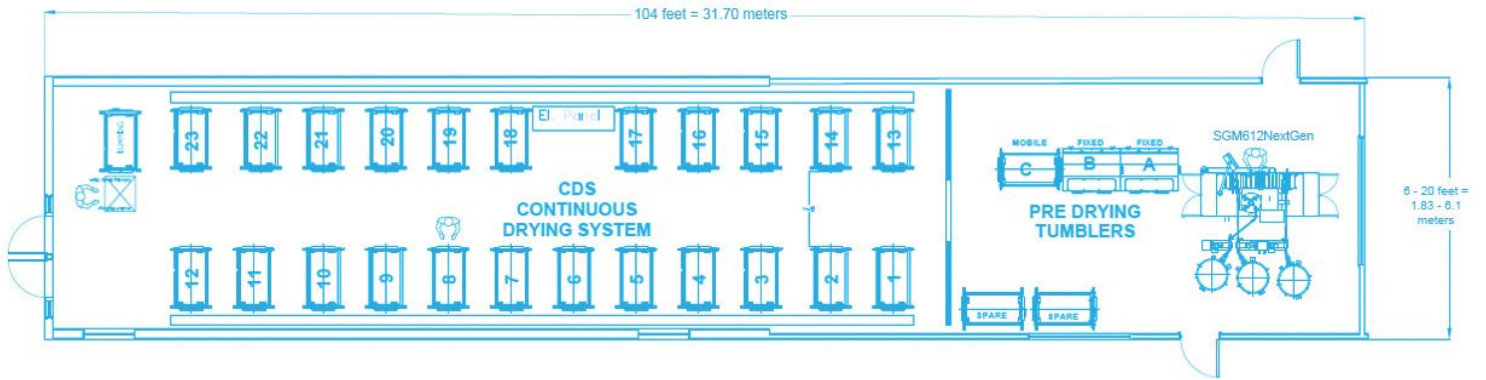
OPTIONAL upon separate request:

- Potentiometer for basket variable speed adjustment

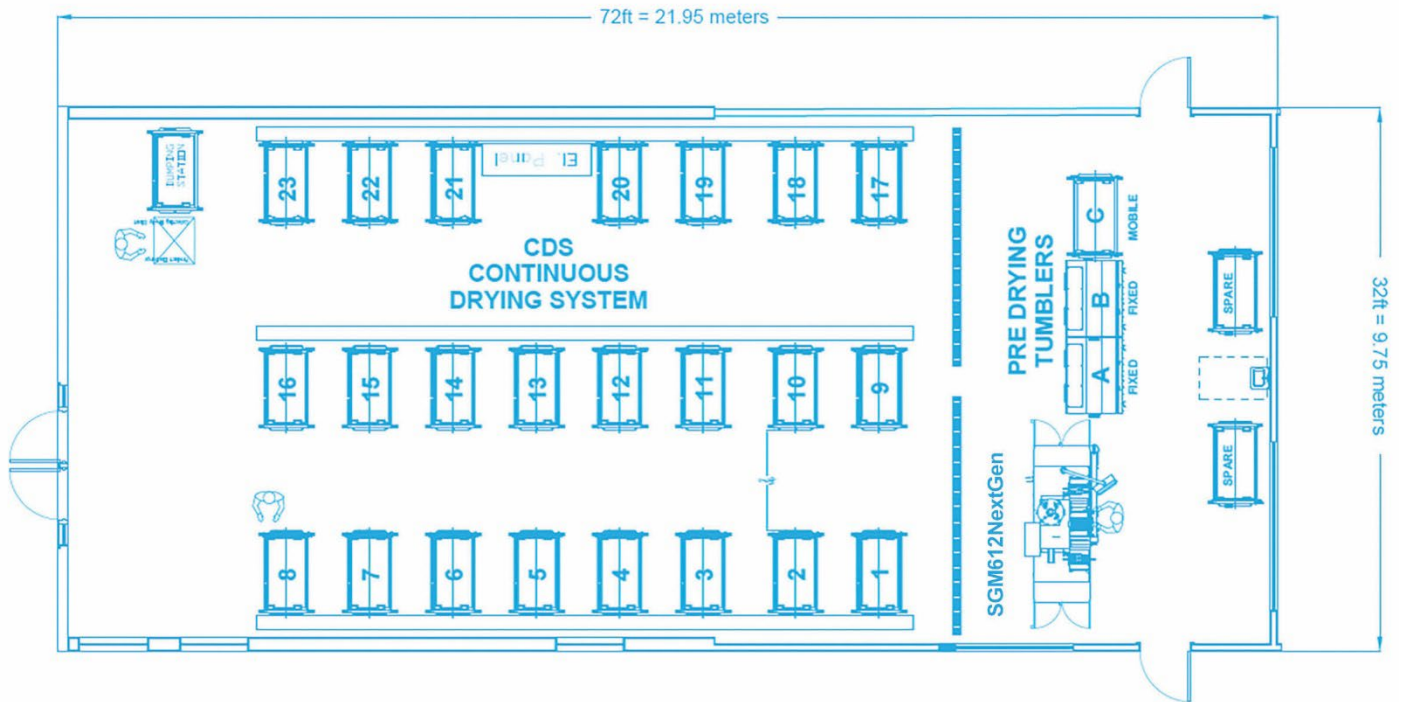


Continuous Dryers

CDS Model



Sample Diagram #1



Sample Diagram #2

Continuous Dryers

CDS Model

Efficient Soft Gel Capsule Drying

A Continuous Drying System (CDS) has been designed to provide finished, dried capsules with minimum product handling using 3 drying zones or stages.



The system consists of:

- 2 Stationary drying units, which are located by the Soft Gel Machine in the encapsulation room;
- Several mobile drying units, which will be moved from the encapsulation room to the drying room once they are filled with capsules;
- The number of mobile drying units can be customized to Soft Gel Machine output and capacity requirements.

Drying Zones

1

Zone 1 - This stage is where product is discharged from the encapsulation machine and is subjected to gentle drying within the stationary units to remove most of the superficial moisture, while firming up the shell for the next zone.

2

Zone 2 - Capsules are transferred from the encapsulation room to the drying room in the mobile units once capacity is reached. This stage is where product undergoes intensive drying, under high air temperature with low air moisture content.

3

Zone 3 - This stage is where product completes the drying process and is cooled to reach an equilibrium with the ambient air temperature.

Continuous Dryers

CDS Model

Single Basket Tumble Dryer

The CDS Model consists of:

- Design helps facilitates easy of use for drying mechanism and soft gels.
- High-efficiency unit, capable of up to 100kg of wet soft gels.
- The basket driving mechanism uses only high-quality transmission toothed belts, eliminating the need for lubrication, thus avoiding contamination.
- GMP construction, using stainless steel for all exposed surfaces of the unit.
- Exposed hardware limited to a minimum for easy cleaning.
- Advanced safety features.

Primary Advantages



Fast Changeover

Easy to handle and clean the mobile unit.



Versatile Air Parameters

Air parameters can be adapted for different product formulations.



System Flexibility

Allows for various configurations, limited only



Customizable

The number of mobile units can be configured based on various machine sizes and output.



Reduced Contamination Risk

Product isolation in each mobile unit reduces the risk of contamination.

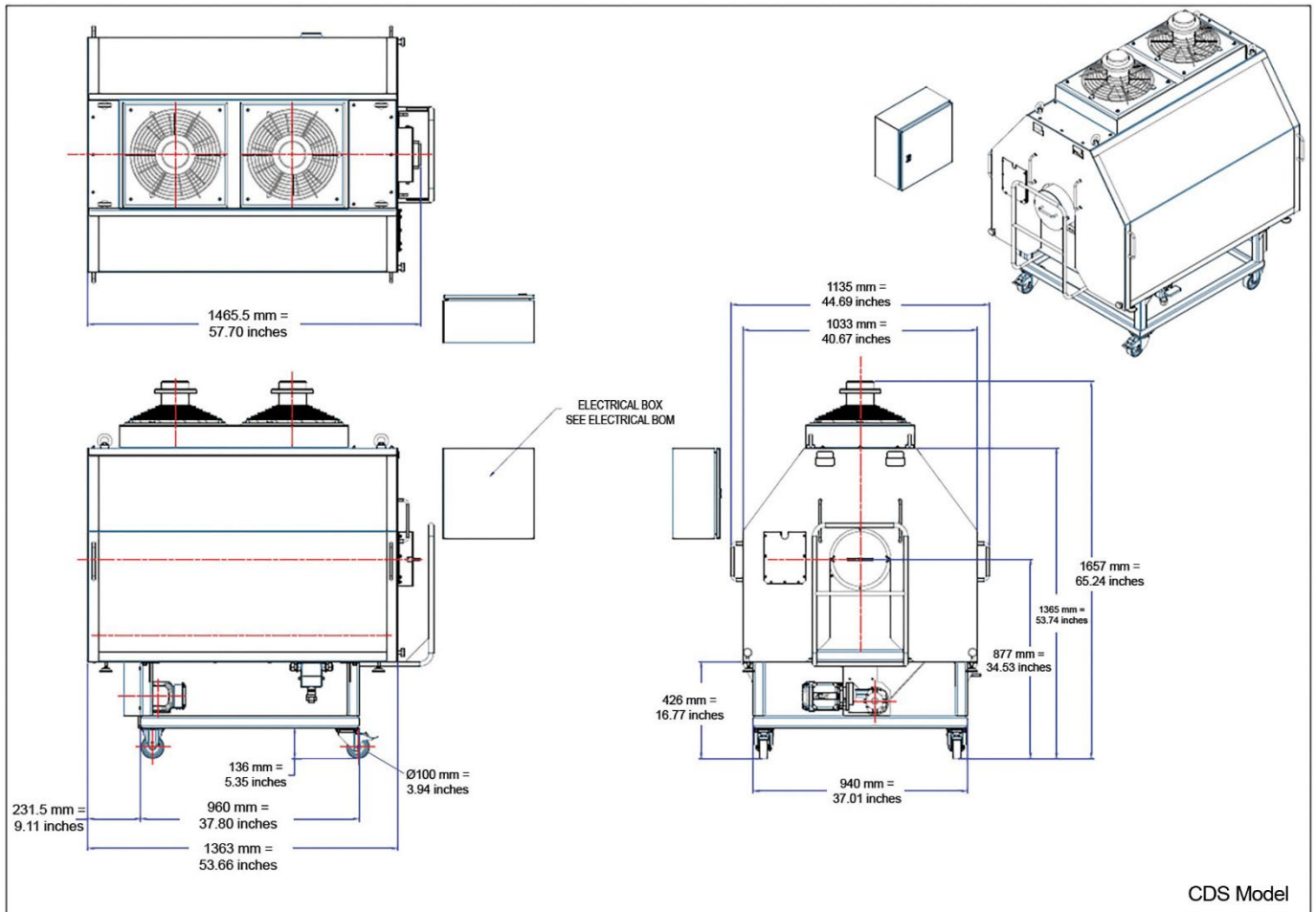


High-Efficiency

All zones are supplied with dry air without the exposure of external room conditions.

Continuous Dryers

CDS Model



Model No.	
CDS 60KG	Continuous Dryer – up to 60kg Capacity (for standard Bovine Soft Gels)
CDS 100KG	Continuous Dryer – up to 100kg Capacity (for standard Bovine Soft Gels)
Weight	
CDS 100KG	381kg – Complete Unit 84kg – Basket 90kg – Cover 207kg – Cart
Specifications	
Dimensions (mm/inches)	1135mmL x 1465.5mmW x 1657mmH x / 44.69” L x 57.70” W x 65.24” H

TECHNOPHAR

Technophar Global Headquarters

www.technophar.com

Copyright Technophar ©2022

2022-12-06 rev.

Soft Gel Tumble Dryer

TD5 Model



Soft Gel Tumble Dryer

TD5 Model

Technophar's tumble dryers are offered as a standalone unit or in combination with our encapsulation machines. The TD5 model is UL or CE certified, with FDA-approved material, contact-parts and fulfills cGMP standards of the pharmaceutical industry. Variable speed, high-frequency blower, automatic capsules transfer, built-in gentle heating, and more production parameters are set using a Programmable Logic Controller with touchscreen. Light-weight baskets allow for quick changeovers, easy clean-up, and inspection.

Features

- Anodized aluminum frame and stainless-steel covers with number 4 finish for fast, thorough cleaning.
- Variable basket speeds (up to 80 rpm), completely adjusted through the operator's panel.
- Maximum basket load - 12 kg.
- High-capacity frequency drive blower unit.
- Built-in heating allows for gentle heating of specific products.
- Light-weight baskets with stainless steel perforated plate and large opening allow for quick changeovers, easy clean-up, and inspection.
- Lightweight, simple to install, clear Lexan covers.
- Lighted motor housing service area.
- Quick-change filter access doors.
- Easy lubrication from the side of the machine.
- Smooth surface in all areas for complete cleaning.

Mechanism

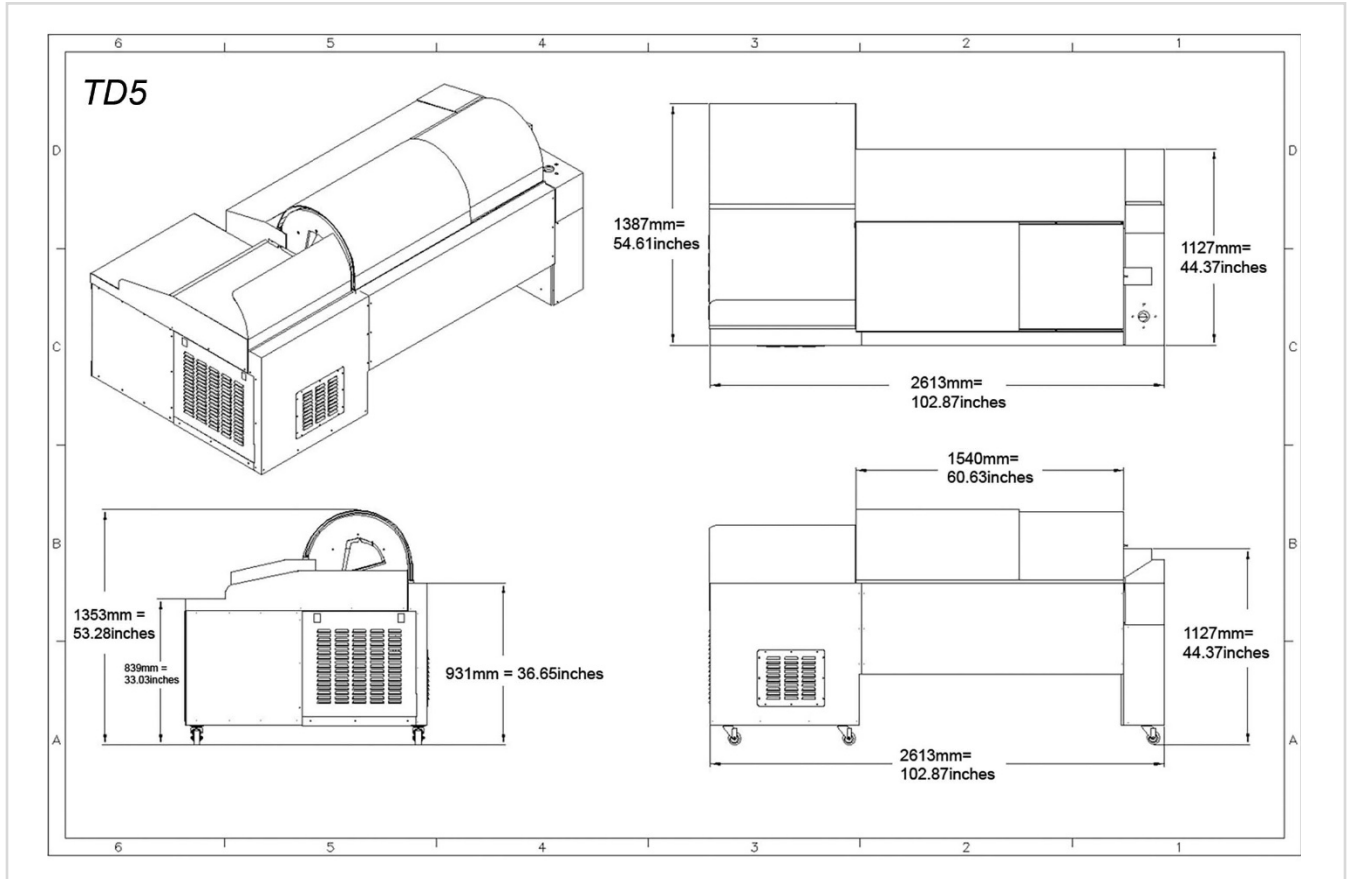
Highlights

- PLC is incorporated within the standalone unit.
- One variable speed direct drive electrical motor rotates the baskets.
- Programmable drying and capsule transfer time.
- Pneumatic actuated doors allow capsules to be transferred throughout the tumbler. and be discharged at the end of the drying cycle.

Soft Gel Tumble Dryer

TD5 Model

Specifications



Model No.	
TD5	Soft Gel Tumble Dryer
Specifications	
Compressed Air	8 Bar
Machine TD Electrical Power	7KVA without heaters
Dimensions (mm/inches)	2613mmL x 1387mmW x 1353mmH (mm) / 102.87" L x 54.61" W x 53.28" H (inches)

TECHNOPHAR

Technophar Global Headquarters

www.technophar.com

Copyright Technophar ©2022

2022-01-18 rev.

Soft Gel Tumble Dryer

TD8 Model



Soft Gel Tumble Dryer

TD 8 Model

Technophar's tumble dryers are offered as a standalone unit or in combination with our encapsulation machines. The TD8 model is UL or CE certified, with FDA approved material contact parts and fulfills cGMP standards of the pharmaceutical industry. Variable speed, high frequency blower, automatic capsules transfer, built in gentle heating, and more production parameters are set using a Programmable Logic Controller with touchscreen. Light-weight baskets allow for quick changeovers, easy clean up, and inspection.

Features

- Anodized aluminum frame and stainless-steel covers with number 4 finish for fast, thorough cleaning.
- Variable basket speeds (up to 80 RPM), completely adjusted through the operator's panel.
- Maximum basket load - 12 kg.
- High-capacity frequency drive blower unit.
- Built-in heating allows for gentle heating of specific products.
- Light-weight baskets with stainless steel perforated plate allow for quick changeovers, easy clean-up and inspection.
- Lightweight, simple to install, clear Lexan covers.
- Lighted motor housing service area.
- Quick-change filter access doors.
- Easy lubrication from the side of the machine.
- Smooth surface in all areas for complete cleaning.

Mechanism

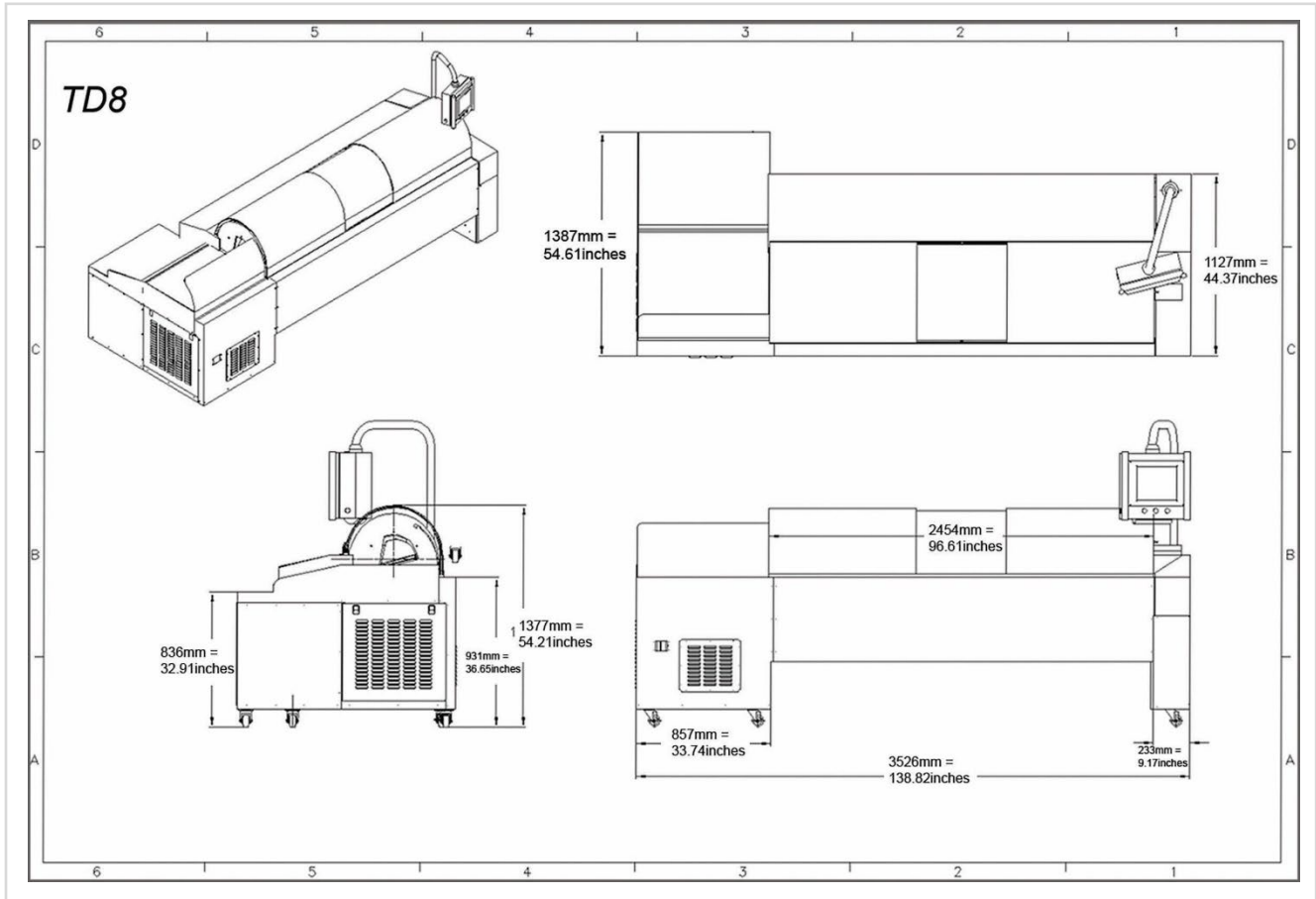
Highlights

- PLC is incorporated within the standalone unit.
- One variable speed direct drive electrical motor rotates the baskets.
- Programmable drying and capsule transfer time.
- Pneumatic actuated doors allow capsules to be transferred throughout the tumbler. and be discharged at the end of the drying cycle.

Soft Gel Tumble Dryer

TD 8 Model

Specifications



Model No.	
TD8	Soft Gel Tumble Dryer
Specifications	
Compressed Air	8 Bar
Machine TD Electrical Power	12KVA without heaters
Dimensions (mm/inches)	3526mmW x 1387mmD x 1377mmH (mm) = 138.82" W x 54.61" D x 54.21" (inches)

TECHNOPHAR

Technophar Global Headquarters

www.technophar.com

Copyright Technophar ©2021

2022-01-13 rev.

Soft Gel Tumble Dryer

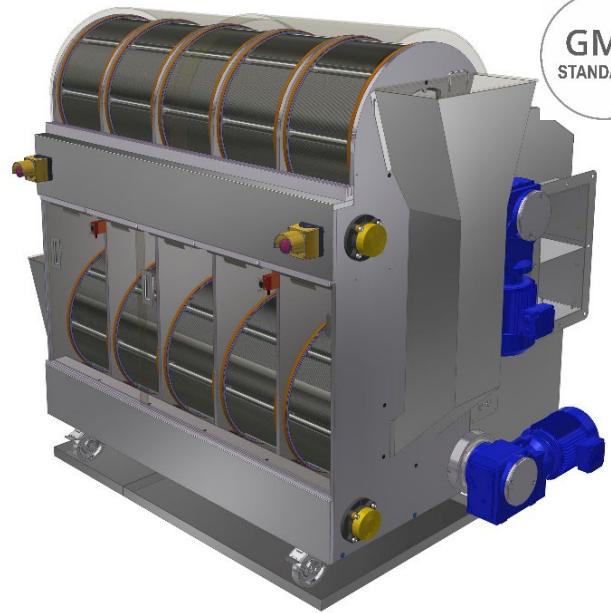
TD10 Models



Single Deck



Double Deck



Soft Gel Tumble Dryer

TD10 Model

Technophar's tumble dryers are offered as a standalone unit or in combination with our encapsulation machines. The TD10 model fulfills cGMP standards of the pharmaceutical industry. Variable speed, energy-efficient design, automatic capsule transfer, built-in gentle heating, and more production parameters are set using a Programmable Logic Controller (PLC) with a touchscreen. Light-weight baskets allow for quick changeovers, easy clean-up, and inspection.

Features

- Anodized aluminum frame and stainless-steel covers with number 4 finish for fast, thorough cleaning.
- Variable basket speeds (up to 80 RPM), completely adjusted through the operator's panel.
- Maximum basket load - 12 kg.
- Built-in heating option available upon request, allowing for gentle heating of specific products.
- Lightweight baskets with stainless steel perforated plate allows for quick changeovers, easy clean-up and inspection.
- Lightweight, simple to install, clear Lexan covers.
- Lighted motor housing service area.
- Quickly change filter access doors.
- Easy lubrication from the side of the machine.
- Smooth surface in all areas for complete cleaning.
- Energy-efficient design/size allows for increased production space.
- Built-in safety feature, so when the cover is off, the dryer stops rotation.

Mechanism

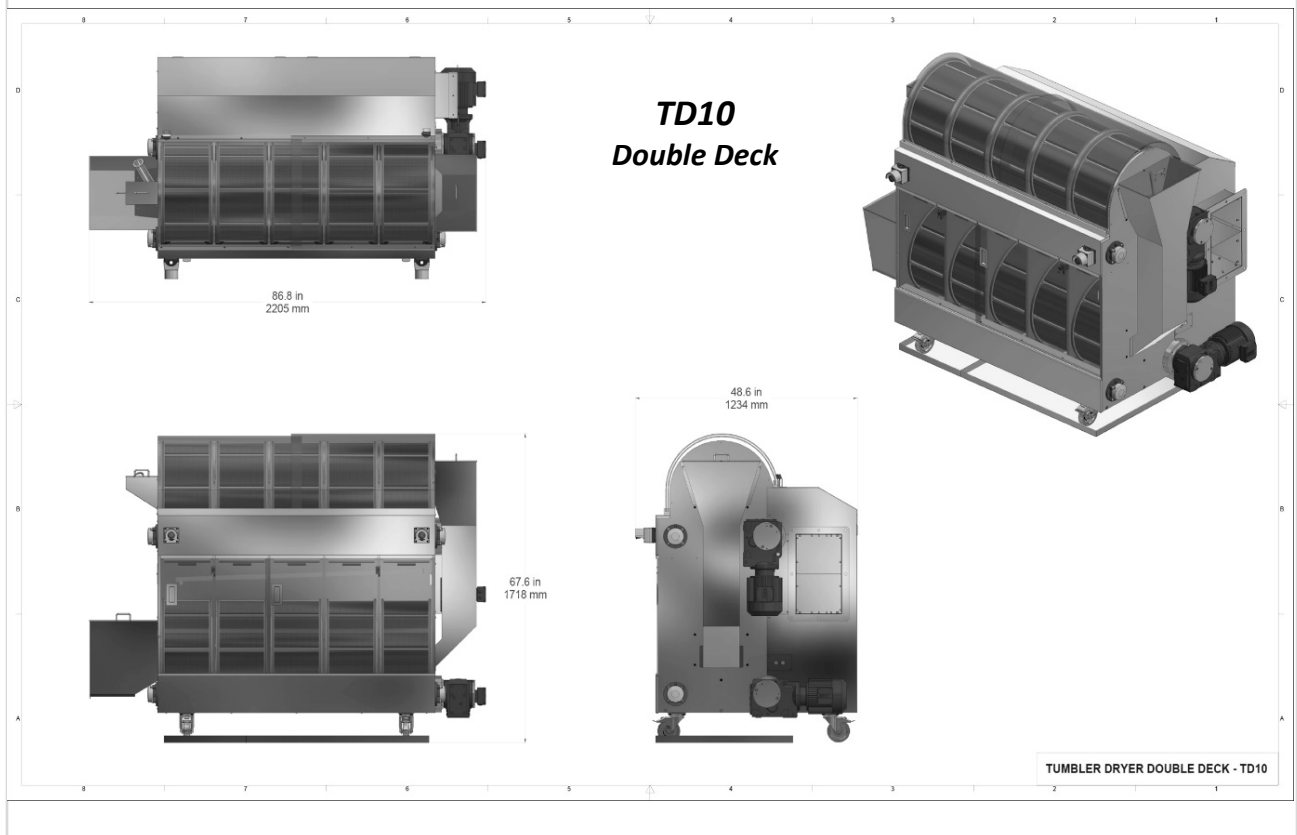
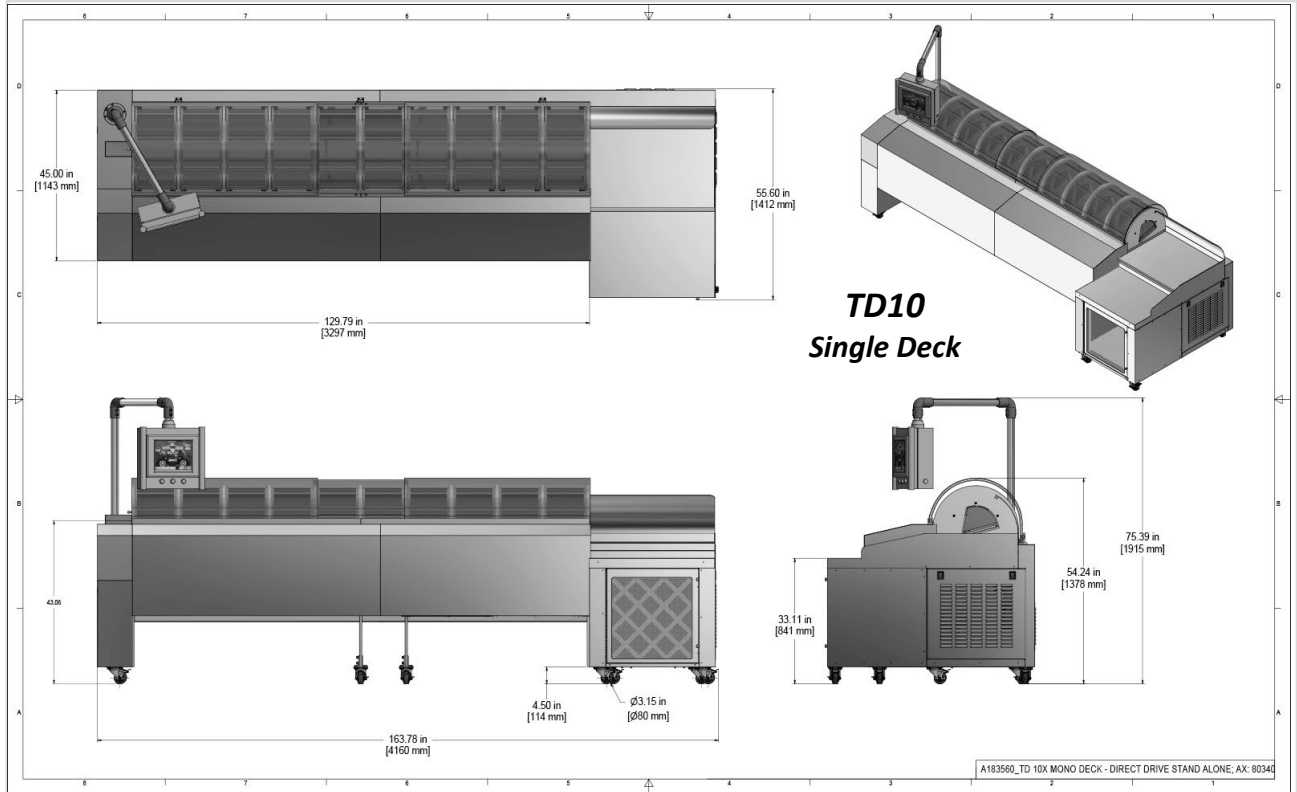
Highlights

- PLC is incorporated within the standalone unit.
- One variable speed direct drive electrical motor rotates the baskets.
- Programmable drying and capsule transfer time.
- Pneumatic actuated doors allow capsules to be transferred throughout the tumbler. and be discharged at the end of the drying cycle.

Soft Gel Tumble Dryer

TD10 Model

Specifications



Soft Gel Tumble Dryer

TD10 Model

Model No.	
TD10	Soft Gel Tumble Dryer – single deck
Specifications	
Compressed Air	8 Bar
Machine TD Electrical Power	12KVA without heaters
TD10 Dimensions (mm/inches)	4160mmW x 1412mmD x 1378mmH (mm) / 163.78" W x 55.60" D x 54.24" H (inches)
Weight	1450kg (3197 lbs)
Model No.	
TD10 - Double Deck	Soft Gel Tumble Dryer – double deck
Specifications	
Compressed Air	6 Bar
Machine TD Electrical Power	12KVA without heaters
Unit Size	Smaller footprint, allowing for flexible layout configurations/positioning
TD10 – Double Deck Dimensions (mm/inches)	2205mmW x 1234mmD x 1718mmH (mm) / 86.8" W x 48.6" D x 67.6" H
Weight	870kg (1918 lbs)

TECHNOPHAR

Technophar Global Headquarters

www.technophar.com

Copyright Technophar ©2022

2023-01-18 rev.



Soft Gel Tumble Dryer

TD24 Model



Soft Gel Tumble Dryer

TD24 Model

Technophar's tumble dryers are offered as a standalone unit or in combination with our encapsulation machines. The **TD24 Model** is UL or CE certified, with FDA-approved material, contact-parts, and fulfills cGMP standards of the pharmaceutical industry. Variable speed, high-frequency blower, automatic capsule transfer, built-in gentle heating, and more production parameters are set using a Programmable Logic Controller with a touchscreen. Light-weight baskets allow for quick changeovers, easy clean-up, and inspection.

Features

- Allows longer drying time, thus extracting more water from the capsules, and reducing the Drying Tunnels' drying time - compare with the one row and fewer baskets tumble dryer model.
- Anodized aluminum frame and stainless-steel covers with number 4 finish for fast, thorough cleaning.
- Maximum basket load - 12 kg.
- Built-in heating available upon request, allowing for gentle heating of specific products.
- Tumble dryers are offered as standalone units or in combination with Technophar machines.
- Light-weight baskets with stainless-steel perforated plate allow for quick changeovers, easy clean-up, and inspection.
- Lightweight, simple to install, clear Lexan covers.
- Easy lubrication from the side of the machine.
- Discharge Conveyor allows transferring the capsules from the Tumble Dryer to the Spreading Table.
- Blower for transferring the capsules from the Encapsulation Machine to the Tumble Dryer available.

Mechanism

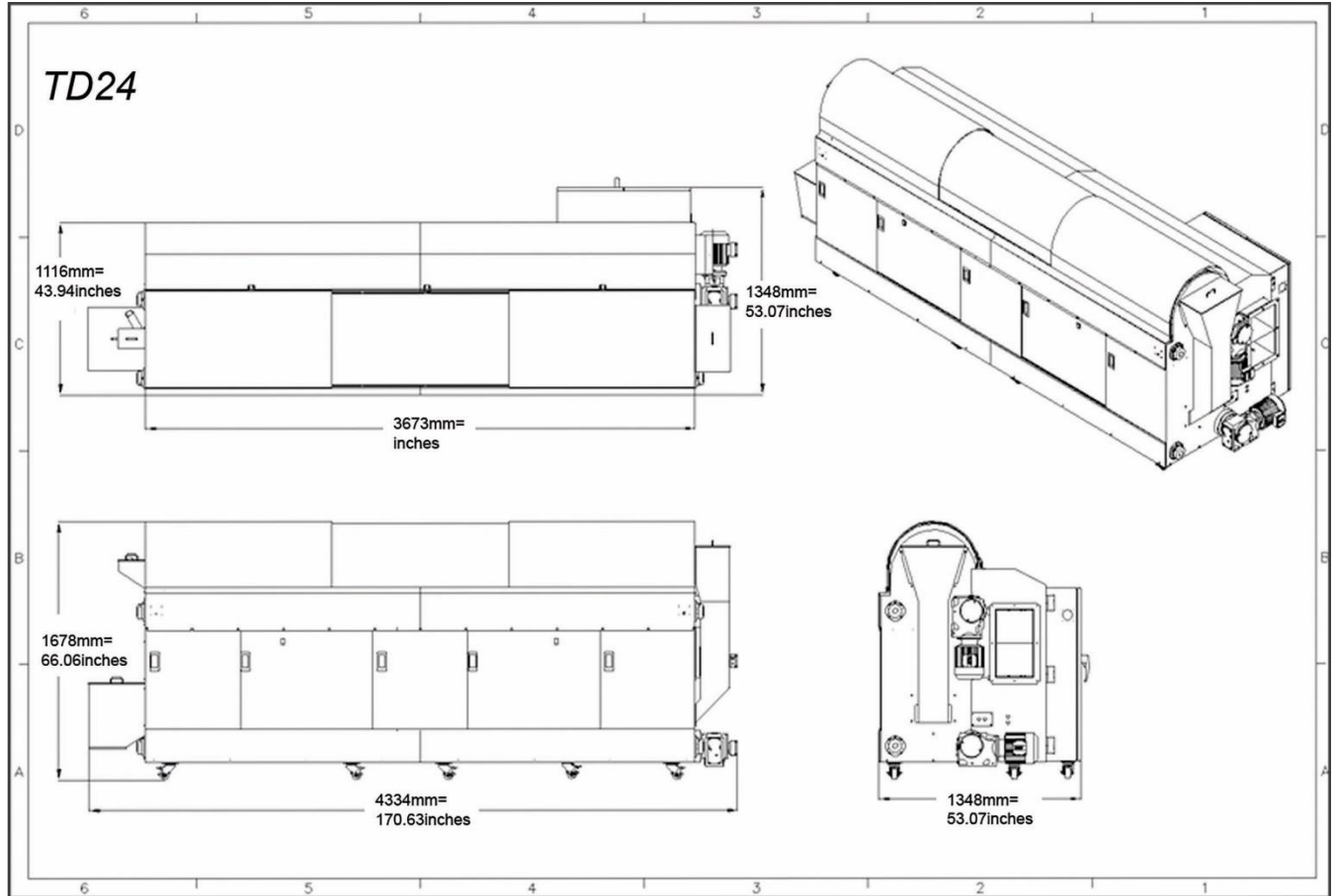
Highlights

- Electrical panel and PLC incorporated within the standalone unit.
- Two (2) variable speed direct drive electrical motors rotate the baskets.
- Pneumatic actuated doors allow capsules to be transferred throughout the tumbler and discharged at the end of the drying cycle.
- Programmable drying and capsule transfer time.

Soft Gel Tumble Dryer

TD24 Model

Specifications



Model No.	
TD24	Soft Gel Tumble Dryer - Double Deck
Specifications	
Compressed Air	8 Bar
Machine TD Electrical Power	14KVA without heaters
Dimensions (mm/inches)	4334mmL x 1348mmW x 1678mmH (mm) / 170.63" L x 53.07" W x 66.06" H (inches)
Weight (kg/lb)	(2500kg/ 5512 lbs)

TECHNOPHAR

Technophar Global Headquarters

www.technophar.com

Copyright Technophar ©2022

2023-01-17 rev.

2023 Die Roll Production Rates

SGL207NextGen
SGM612NextGen[®]

STANDARD SOFTGEL CAPSULE SHAPES AND SIZES

2 Oval Minims: 1.5–1.8 CC: 0.092–0.111	3 Oval Minims: 2.4–3.0 CC: 0.148–0.185	4 Oval Minims: 3.1–4.0 CC: 0.191–0.246	5 Oval Minims: 4.3–5.0 CC: 0.265–0.308	6 Oval Minims: 5.2–6.0 CC: 0.320–0.370	7.5 Oval Minims: 6.2–7.5 CC: 0.382–0.462	10 Oval Minims: 7.5–10.0 CC: 0.462–0.616	12 Oval Minims: 8.3–12.0 CC: 0.511–0.739	16 Oval Minims: 12.4–16.0 CC: 0.764–0.986	20 Oval Minims: 17.0–20.0 CC: 1.047–1.232	40 Oval Minims: 30.0–40.0 CC: 1.848–2.454
---	---	---	---	---	---	---	---	--	--	--



3 Oblong Minims: 2.3–3.0 CC: 0.142–0.185	4 Oblong Minims: 3.0–3.0 CC: 0.185–0.246	5 Oblong Minims: 4.0–5.0 CC: 0.246–0.308	6 Oblong Minims: 5.0–6.0 CC: 0.308–0.370	8 Oblong Minims: 6.5–8.0 CC: 0.400–0.493	9.5 Oblong Minims: 7.5–9.5 CC: 0.462–0.585	11 Oblong Minims: 8.5–11.0 CC: 0.524–0.678	14 Oblong Minims: 12.5–14.0 CC: 0.770–0.862	16 Oblong Minims: 14.0–16.0 CC: 0.862–0.986	20 Oblong Minims: 16.0–20.0 CC: 0.986–1.232	22 Oblong Minims: 18.0–22.0 CC: 1.109–1.355
---	---	---	---	---	---	---	--	--	--	--



2 Round Minims: 1.2–2.0 CC: 0.074–0.124	3 Round Minims: 2.2–3.0 CC: 0.136–0.185	4 Round Minims: 2.8–4.0 CC: 0.172–0.246	5 Round Minims: 3.2–5.0 CC: 0.197–0.308	6 Round Minims: 4.6–6.0 CC: 0.283–0.370	7 Round Minims: 5.0–7.0 CC: 0.308–0.431	9 Round Minims: 7.0–9.0 CC: 0.431–0.554	28 Round Minims: 22.0–30.0 CC: 1.355–1.848	40 Round Minims: 32.0–41.0 CC: 1.971–2.928	90 Round Minims: 70.0–80.0 CC: 4.312–4.928	110 Round Minims: 75.0–100.0 CC: 4.650–6.160
--	--	--	--	--	--	--	---	---	---	---



NOTE: Capsule images shown are not to scale.
 Shapes, sizes, colours and fill depend on customer requirements.
 Custom designed shapes are also available for customer requirements.



Oval Capsule Sizes

Capsule Size	Machine	Die Roll Size [Dia. x Len.]	# of Cavities Across	# of Cavities Around	Total # of Cavities	Capsules/Hr.											Notes	
						2.5 RPM	3 RPM	3.5 RPM	4 RPM	4.5 RPM	5 RPM	5.5 RPM	6 RPM	6.5 RPM	7 RPM	7.5 RPM		8 RPM
1 Oval	SGL207NextGen	4.040" x 2.756"	5	36	180	27,000	32,400	37,800	43,200	48,600	54,000							mini pump/SOV
	SGM612NextGen®	5.9055" x 12"	25	46	1150	172,500	207,000	241,500	276,000	310,500	345,000	379,500	414,000	448,500	483,000	517,500	552,000	mini pump/SOV
2 Oval	SGL207NextGen	4.040" x 2.756"	5	31	155	23,250	27,900	32,550	37,200	41,850	46,500							mini pump/SOV
	SGM612NextGen®	5.9055" x 12"	27	46	1242	186,300	223,560	260,820	298,080	335,340	372,600	409,860	447,120	484,380	521,640	558,900	596,160	mini pump/SOV
3 Oval	SGL207NextGen	4.040" x 2.756"	4	30	120	18,000	21,600	25,200	28,800	32,400	39,600							mini pump/SOV
	SGM612NextGen®	5.9055" x 12"	24	43	1032	154,800	185,760	216,720	247,680	278,640	309,600	340,560	371,520	402,480	433,440	464,400	495,360	mini pump/SOV
4 Oval	SGL207NextGen	4.040" x 2.756"	4	29	116	17,400	20,880	24,360	27,840	31,320	34,800							mini pump/SOV recommended
	SGM612NextGen®	5.9055" x 12"	20	42	840	126,000	151,200	176,400	201,600	226,800	252,000	277,200	302,400	327,600	352,800	378,000	403,200	mini pump/SOV recommended
5 Oval	SGL207NextGen	4.040" x 2.756"	3	28	84	12,600	15,120	17,640	20,160	22,680	25,200							
	SGM612NextGen®	5.9055" x 12"	19	40	760	114,000	136,800	159,600	182,400	205,200	228,000	250,800	273,600	296,400	319,200	342,000	364,800	
6 Oval	SGL207NextGen	4.040" x 2.756"	3	26	78	11,700	14,040	16,380	18,720	21,060	23,400							
	SGM612NextGen®	5.9055" x 12"	18	36	648	97,200	116,640	136,080	155,520	174,960	194,400	213,840	233,280	252,720	272,160	291,600	311,040	
7 Oval	SGL207NextGen	4.040" x 2.756"	3	24	72	10,800	12,960	17,280	17,280	19,440	21,600							
	SGM612NextGen®	5.9055" x 12"	17	35	595	89,250	107,100	124,950	142,800	160,650	178,500	196,350	214,200	232,050	249,900	267,750	285,600	
7.5 Oval	SGL207NextGen	4.040" x 2.756"	3	25	75	11,250	13,500	15,750	18,000	20,250	22,500							
	SGM612NextGen®	5.9055" x 12"	16	36	576	86,400	103,680	120,960	138,240	155,520	172,800	190,080	207,360	224,640	241,920	259,200	276,480	
8.5 Oval	SGL207NextGen	4.040" x 2.756"	3	24	72	10,800	12,960	15,120	17,280	19,440	21,600							
	SGM612NextGen®	5.9055" x 12"	16	35	560	84,000	100,800	117,600	134,400	151,200	168,000	184,800	201,600	218,400	235,200	252,000	268,800	



Oval Capsule Sizes

Capsule Size	Machine	Die Roll Size [Dia. x Len.]	# of Cavities Across	# of Cavities Around	Total # of Cavities	Capsules/Hr.											Notes	
						2.5 RPM	3 RPM	3.5 RPM	4 RPM	4.5 RPM	5 RPM	5.5 RPM	6 RPM	6.5 RPM	7 RPM	7.5 RPM		8 RPM
10 Oval	SGL207NextGen	4.040" x 2.756"	2	23	46	6,900	8,280	9,660	11,040	12,420	13,800							
	SGM612NextGen®	5.9055" x 12"	16	34	544	81,600	97,920	114,240	130,560	146,880	163,200	179,520	195,840	212,160	228,480	244,800	261,120	
12 Oval	SGL207NextGen	4.040" x 2.756"	2	20	40	6,000	7,200	8,400	9,600	10,800	12,000							
	SGM612NextGen®	5.9055" x 12"	16	30	480	72,000	86,400	100,800	115,200	129,600	144,000	158,400	172,800	187,200	201,600	216,000	230,400	
14 Oval	SGL207NextGen	4.040" x 2.756"	2	20	40	6,000	7,200	8,400	9,600	10,800	12,000							
	SGM612NextGen®	5.9055" x 12"	16	30	480	72,000	86,400	100,800	115,200	129,600	144,000	158,400	172,800	187,200	201,600	216,000	230,400	
16 Oval	SGL207NextGen	4.040" x 2.756"	2	19	38	5,700	6,840	7,980	9,120	10,260	11,400							
	SGM612NextGen®	5.9055" x 12"	14	27	378	56,700	68,040	79,380	90,720	102,060	113,400	124,740	136,080	147,420	158,760	170,100	181,440	
20 Oval	SGL207NextGen	4.040" x 2.756"	2	18	36	5,400	6,480	7,560	8,640	9,720	10,800							
	SGM612NextGen®	5.9055" x 12"	13	27	351	52,650	63,180	73,710	84,240	94,770	105,300	115,830	126,360	136,890	147,420	157,950	168,480	
40 Oval	SGL207NextGen	4.040" x 2.756"	1	16	16	2,400	2,880	3,360	3,840	4,320	4,800							
	SGM612NextGen®	5.9055" x 12"	11	23	253	37,950	45,540	53,130	60,720	68,310	75,900	83,490	91,080	98,670	106,260	113,850	121,440	
80 Oval	SGL207NextGen	4.040" x 2.756"	1	13	13	1,950	2,340	2,730	3,120	3,510	3,900							
	SGM612NextGen®	5.9055" x 12"	9	19	171	25,650	30,780	35,910	41,040	46,170	51,300	56,430	61,560	66,690	71,820	76,950	82,080	



Oblong Capsule Sizes

Capsule Size	Machine	Die Roll Size [Dia. x Len.]	# of Cavities Across	# of Cavities Around	Total # of Cavities	Capsules/Hr.											Notes	
						2.5 RPM	3 RPM	3.5 RPM	4 RPM	4.5 RPM	5 RPM	5.5 RPM	6 RPM	6.5 RPM	7 RPM	7.5 RPM		8 RPM
3 Oblong	SGL207NextGen	4.040" x 2.756"	3	34	102	15,300	18,360	21,420	24,480	27,540	30,600							mini pump/SOV
	SGM612NextGen®	5.9055" x 12"	18	48	864	129,600	155,520	181,440	207,360	233,280	259,200	285,120	311,040	336,960	362,880	388,800	414,720	mini pump/SOV
4 Oblong	SGL207NextGen	4.040" x 2.756"	3	32	96	14,400	17,280	20,160	23,040	25,920	28,800							mini pump/SOV recommended
	SGM612NextGen®	5.9055" x 12"	15	47	705	105,750	126,900	148,050	169,200	190,350	211,500	232,650	253,800	274,950	296,100	317,250	338,400	mini pump/SOV recommended
5 Oblong	SGL207NextGen	4.040" x 2.756"	2	32	64	9,600	11,520	13,440	15,360	17,280	19,200							
	SGM612NextGen®	5.9055" x 12"	14	47	658	98,700	118,440	138,180	157,920	177,660	197,400	217,140	236,880	256,620	276,360	296,100	315,840	
6 Oblong	SGL207NextGen	4.040" x 2.756"	2	29	58	8,700	10,440	12,180	13,920	15,660	17,400							
	SGM612NextGen®	5.9055" x 12"	12	43	516	77,400	92,880	108,360	123,840	139,320	154,800	170,280	185,760	201,240	216,720	232,200	247,680	
8 Oblong	SGL207NextGen	4.040" x 2.756"	2	27	54	8,100	9,720	11,340	12,960	14,580	16,200							
	SGM612NextGen®	5.9055" x 12"	12	39	468	70,200	84,240	98,280	112,320	126,360	140,400	154,440	168,480	182,520	196,560	210,600	224,640	
9.5 Oblong	SGL207NextGen	4.040" x 2.756"	2	26	52	7,800	9,360	10,920	12,480	14,040	15,600							
	SGM612NextGen®	5.9055" x 12"	11	36	396	59,400	71,280	83,160	95,040	106,920	118,800	130,680	142,560	154,440	166,320	178,200	190,080	
11 Oblong	SGL207NextGen	4.040" x 2.756"	2	26	52	7,800	9,360	10,920	12,480	14,040	15,600							
	SGM612NextGen®	5.9055" x 12"	11	37	407	61,050	73,260	85,470	97,680	109,890	122,100	134,310	146,520	158,730	170,940	183,150	195,360	
12 Oblong	SGL207NextGen	4.040" x 2.756"	2	21	42	6,300	7,560	8,820	10,080	11,340	12,600							
	SGM612NextGen®	5.9055" x 12"	11	31	341	51,150	61,380	71,610	81,840	92,070	102,300	112,530	122,760	132,990	143,220	153,450	163,680	
14 Oblong	SGL207NextGen	4.040" x 2.756"	2	24	48	7,200	8,640	10,080	11,520	12,960	14,400							
	SGM612NextGen®	5.9055" x 12"	11	34	374	56,100	67,320	78,540	89,760	100,980	112,200	123,420	134,640	145,860	157,080	168,300	179,520	



Oblong Capsule Sizes

Capsule Size	Machine	Die Roll Size [Dia. x Len.]	# of Cavities Across	# of Cavities Around	Total # of Cavities	Capsules/Hr.											Notes	
						2.5 RPM	3 RPM	3.5 RPM	4 RPM	4.5 RPM	5 RPM	5.5 RPM	6 RPM	6.5 RPM	7 RPM	7.5 RPM		8 RPM
16 Oblong	SGL207NextGen	4.040" x 2.756"	1	24	24	3,600	4,320	5,040	5,760	6,480	7,200							
	SGM612NextGen®	5.9055" x 12"	10	34	340	51,000	61,200	71,400	81,600	91,800	102,000	112,200	122,400	132,600	142,800	153,000	163,200	
18 Oblong	SGL207NextGen	4.040" x 2.756"	1	23	23	3,450	4,140	4,830	5,520	6,210	14,400							
	SGM612NextGen®	5.9055" x 12"	9	34	306	45,900	55,080	64,260	73,440	82,620	91,800	100,980	110,160	119,340	128,520	137,700	146,880	
20 Oblong	SGL207NextGen	4.040" x 2.756"	1	22	22	3,300	3,960	4,620	5,280	5,940	6,600							
	SGM612NextGen®	5.9055" x 12"	10	33	330	49,500	59,400	69,300	79,200	89,100	99,000	108,900	118,800	128,700	138,600	148,500	158,400	
22 Oblong	SGL207NextGen	4.040" x 2.756"	1	22	22	3,300	3,960	4,620	5,280	5,940	6,600							
	SGM612NextGen®	5.9055" x 12"	9	32	288	43,200	51,840	60,480	69,120	77,760	86,400	95,040	103,680	112,320	120,960	129,600	138,240	
23 Oblong	SGL207NextGen	4.040" x 2.756"	1	20	20	3,000	3,600	4,200	4,800	5,400	6,000							
	SGM612NextGen®	5.9055" x 12"	9	30	270	40,500	48,600	56,700	64,800	72,900	81,000	89,100	97,200	105,300	113,400	121,500	129,600	
24 Oblong	SGL207NextGen	4.040" x 2.756"	1	21	21	3,150	3,780	4,410	5,040	5,670	6,300							
	SGM612NextGen®	5.9055" x 12"	9	31	279	41,850	50,220	58,590	66,960	75,330	83,700	92,070	100,440	108,810	117,180	125,550	133,920	
26 Oblong	SGL207NextGen	4.040" x 2.756"	1	21	21	3,150	3,780	4,410	5,040	5,670	6,300							
	SGM612NextGen®	5.9055" x 12"	8	31	248	37,200	44,640	52,080	59,520	66,960	74,400	81,840	89,280	96,720	104,160	111,600	119,040	
28 Oblong	SGL207NextGen	4.040" x 2.756"	1	19	19	2,850	3,420	3,990	4,560	5,130	5,700							
	SGM612NextGen®	5.9055" x 12"	9	28	252	37,800	45,360	52,920	60,480	68,040	75,600	83,160	90,720	98,280	105,840	113,400	120,960	
30 Oblong	SGL207NextGen	4.040" x 2.756"	1	19	19	2,850	3,420	3,990	4,560	5,130	5,700							
	SGM612NextGen®	5.9055" x 12"	9	28	252	37,800	45,360	52,920	60,480	68,040	75,600	83,160	90,720	98,280	105,840	113,400	120,960	



Round Capsule Sizes

Capsule Size	Machine	Die Roll Size [Dia. x Len.]	# of Cavities Across	# of Cavities Around	Total # of Cavities	Capsules/Hr.											Notes	
						2.5 RPM	3 RPM	3.5 RPM	4 RPM	4.5 RPM	5 RPM	5.5 RPM	6 RPM	6.5 RPM	7 RPM	7.5 RPM		8 RPM
1 Round	SGL207NextGen	4.040" x 2.756"	6	36	216	32,400	38,880	45,360	51,840	58,320	64,800							mini pump/SOV
	SGM612NextGen®	5.9055" x 12"	30	48	1440	216,000	259,200	302,400	345,600	388,800	432,000	475,200	518,400	561,600	604,800	648,000	691,200	mini pump/SOV
2 Round	SGL207NextGen	4.040" x 2.756"	5	32	160	24,000	28,800	33,600	38,400	43,200	48,000							mini pump/SOV
	SGM612NextGen®	5.9055" x 12"	30	48	1440	216,000	259,200	302,400	345,600	388,800	432,000	475,200	518,400	561,600	604,800	648,000	691,200	mini pump/SOV
3 Round	SGL207NextGen	4.040" x 2.756"	5	28	140	21,000	25,200	29,400	33,600	37,800	42,000							mini pump/SOV
	SGM612NextGen®	5.9055" x 12"	30	40	1200	180,000	216,000	252,000	288,000	324,000	360,000	396,000	432,000	468,000	504,000	540,000	576,000	mini pump/SOV
4 Round	SGL207NextGen	4.040" x 2.756"	4	25	100	15,000	18,000	21,000	24,000	27,000	30,000							mini pump/SOV
	SGM612NextGen®	5.9055" x 12"	28	36	1008	151,200	181,440	211,680	241,920	272,160	302,400	332,640	362,880	393,120	423,360	453,600	483,840	mini pump/SOV
5 Round	SGL207NextGen	4.040" x 2.756"	4	24	96	14,400	17,280	20,160	23,040	25,920	28,800							
	SGM612NextGen®	5.9055" x 12"	20	35	700	105,000	126,000	147,000	168,000	189,000	210,000	231,000	252,000	273,000	294,000	315,000	336,000	
6 Round	SGL207NextGen	4.040" x 2.756"	4	23	92	13,800	16,560	19,320	22,080	24,840	27,600							
	SGM612NextGen®	5.9055" x 12"	20	34	680	102,000	122,400	142,800	163,200	183,600	204,000	224,400	244,800	265,200	285,600	306,000	326,400	
7 Round	SGL207NextGen	4.040" x 2.756"	4	22	88	13,200	15,840	18,480	21,120	23,760	26,400							
	SGM612NextGen®	5.9055" x 12"	20	33	660	99,000	118,800	138,600	158,400	178,200	198,000	217,800	237,600	257,400	277,200	297,000	316,800	
9 Round	SGL207NextGen	4.040" x 2.756"	4	21	84	12,600	15,120	17,640	20,160	22,680	25,200							
	SGM612NextGen®	5.9055" x 12"	20	31	620	93,000	111,600	130,200	148,800	167,400	186,000	204,600	223,200	241,800	260,400	279,000	297,600	



Round Capsule Sizes

Capsule Size	Machine	Die Roll Size [Dia. x Len.]	# of Cavities Across	# of Cavities Around	Total # of Cavities	Capsules/Hr.											Notes
						2.5 RPM	3 RPM	3.5 RPM	4 RPM	4.5 RPM	5 RPM	5.5 RPM	6 RPM	6.5 RPM	7 RPM	7.5 RPM	
15 Round	SGL207NextGen	4.040" x 2.756"	3	16	48	7,200	8,640	10,080	11,520	12,960	14,400						
	SGM612NextGen®	5.9055" x 12"	19	24	456	68,400	82,080	95,760	109,440	123,120	136,800	150,480	164,160	177,840	191,520	205,200	218,880
28 Round	SGL207NextGen	4.040" x 2.756"	3	16	48	7,200	8,640	10,080	11,520	12,960	14,400						
	SGM612NextGen®	5.9055" x 12"	17	23	391	58,650	70,380	82,110	93,840	105,570	117,300	129,030	140,760	152,490	164,220	175,950	187,680
35 Round	SGL207NextGen	4.040" x 2.756"	3	15	45	6,750	8,100	9,450	10,800	12,150	13,500						
	SGM612NextGen®	5.9055" x 12"	16	21	336	50,400	60,480	70,560	80,640	90,720	100,800	110,880	120,960	131,040	141,120	151,200	161,280
38 Round	SGL207NextGen	4.040" x 2.756"	3	15	45	6,750	8,100	9,450	10,800	12,150	13,500						
	SGM612NextGen®	5.9055" x 12"	16	21	336	50,400	60,480	70,560	80,640	90,720	100,800	110,880	120,960	131,040	141,120	151,200	161,280
90 Round	SGL207NextGen	4.040" x 2.756"	1	11	11	1,650	1,980	2,310	2,640	2,970	3,300						
	SGM612NextGen®	5.9055" x 12"	13	16	208	31,200	37,440	43,680	49,920	56,160	62,400	68,640	74,880	81,120	87,360	93,600	99,840







THE RIGHT SOLUTION. EVERYTIME.

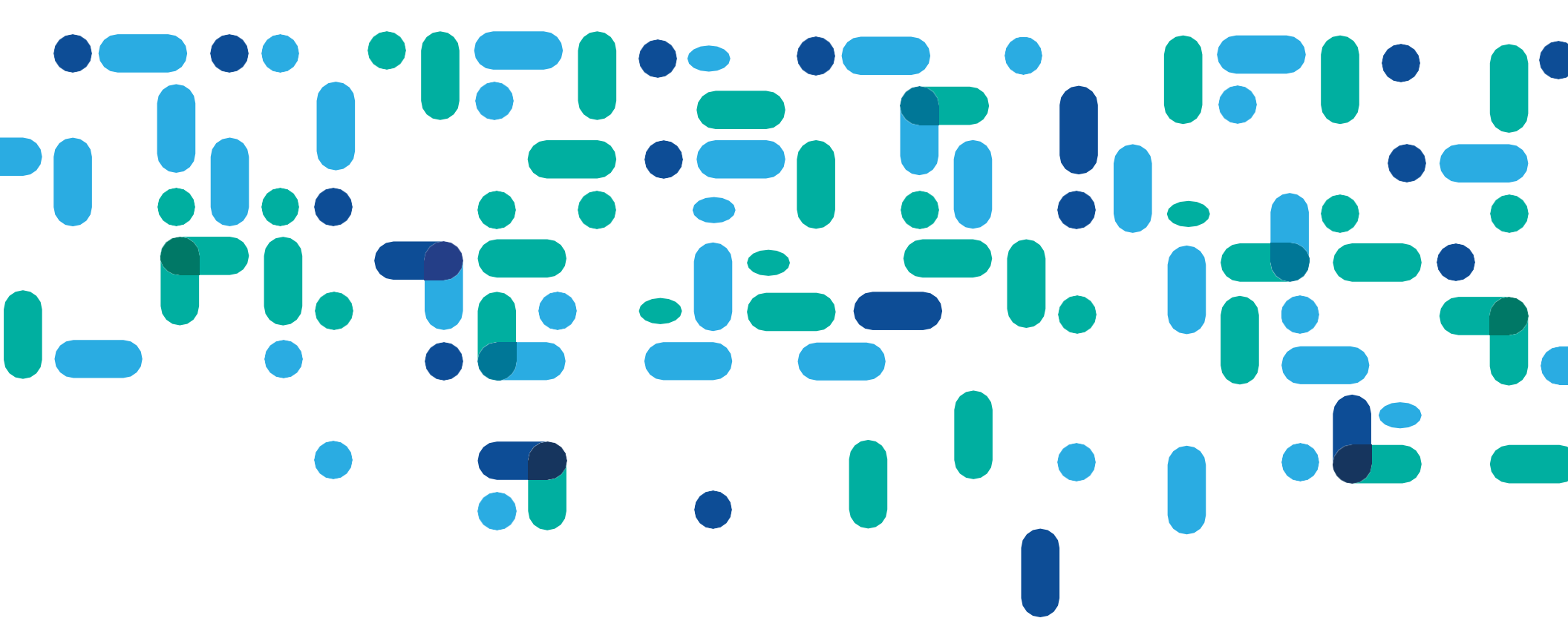
Always giving you more

Looking for other soft gel manufacturing equipment or services? Technophar offers many other products and services designed to give you the same level of technology and quality you've come to expect from us.



-  Soft Gel Machines
-  Soft Gel Drying Systems
-  Soft Gel Auxiliary Equipment
-  Spare Parts & Tooling
-  Pharmaceutical Equipment
-  Preventative Maintenance
-  Operator Training
-  Equipment Upgrades
-  Turnkey Solutions
-  Commissioning & Setup





Get in touch

Looking to learn more about our lineup of products and services? Or simply want more information about our brand? Contact us and one of our highly trained representatives will be happy to help.

www.technophar.com



A QUALICAPS COMPANY

Technophar Equipment & Service

01-17-2023 rev. 4



Mitsubishi Chemical Group Corporation

SGL207NextGen

New lab scale machine with capabilities to produce pilot batches!

- ✓ Higher speed up to 5 RPM
- ✓ Air/Water cooled casting drums
- ✓ 4 plunger medicine pump
- ✓ 21 CFR Part 11 compliance software
- ✓ Control of all production and process using PLC with touch screen
- ✓ Designed according to the GMP/FDA requirements
- ✓ Motion Control System using servo motors
- ✓ Easy cleaning and maintenance



Production Rates for SGL207 NextGen

Die Roll Size [Dia. x Len.] 4.040" x 2.756"

Capsule Size	Number of Cavities Across	Number of Cavities Around	Total Number of Cavities	Capsules/hr.					
				RPM	RPM	RPM	RPM	RPM	RPM
				2.5	3	3.5	4	4.5	5
1 Oval	5	36	180	27,000	32,400	37,800	43,200	48,600	54,000
2 Oval	5	31	155	23,250	27,900	32,550	37,200	41,850	46,500
3 Oval	4	30	120	18,000	21,600	25,200	28,800	32,400	36,600
4 Oval	4	29	116	17,400	20,880	24,360	27,840	31,320	34,800
5 Oval	3	28	84	12,600	15,120	17,640	20,160	22,680	25,200
6 Oval	3	26	78	11,700	14,040	16,380	18,720	21,060	23,400
7 Oval	3	24	72	10,800	12,960	15,120	17,280	19,440	21,600
7.5 Oval	3	25	75	11,250	13,500	15,750	18,000	20,250	22,500
8.5 Oval	3	24	72	10,800	12,960	15,120	17,280	19,440	21,600
10 Oval	2	23	46	6,900	8,280	9,660	11,040	12,420	13,800
12 Oval	2	20	40	6,000	7,200	8,400	9,600	10,800	12,000
14 Oval	2	20	40	6,000	7,200	8,400	9,600	10,800	12,000
16 Oval	2	19	38	5,700	6,840	7,980	9,120	10,260	11,400
20 Oval	2	18	36	5,400	6,480	7,560	8,640	9,720	10,800
40 Oval	1	16	16	2,400	2,880	3,360	3,840	4,320	4,800
80 Oval	1	13	13	1,950	2,340	2,730	3,120	3,510	3,900
3 Oblong	3	34	102	15,300	18,360	21,420	24,480	27,540	30,600
4 Oblong	3	32	96	14,400	17,280	20,160	23,040	25,920	28,800
5 Oblong	2	32	64	9,600	11,520	13,440	15,360	17,280	19,200
6 Oblong	2	29	58	8,700	10,440	12,180	13,920	15,660	17,400
8 Oblong	2	27	54	8,100	9,720	11,340	12,960	14,580	16,200
9.5 Oblong	2	26	52	7,800	9,360	10,920	12,480	14,040	15,600
11 Oblong	2	26	52	7,800	9,360	10,920	12,480	14,040	15,600
12 Oblong	2	21	42	6,300	7,560	8,820	10,080	11,340	12,600

Capsule Size	Number of Cavities Across	Number of Cavities Around	Total Number of Cavities	Capsules/hr.					
				RPM	RPM	RPM	RPM	RPM	RPM
				2.5	3	3.5	4	4.5	5
14 Oblong	2	24	48	7,200	8,640	10,080	11,520	12,960	14,400
16 Oblong	1	24	24	3,600	4,320	5,040	5,760	6,480	7,200
18 Oblong	1	23	23	3,450	4,140	4,830	5,520	6,210	6,900
20 Oblong	1	22	22	3,300	3,960	4,620	5,280	5,940	6,600
22 Oblong	1	22	22	3,300	3,960	4,620	5,280	5,940	6,600
23 Oblong	1	20	20	3,000	3,600	4,200	4,800	5,400	6,000
24 Oblong	1	21	21	3,150	3,780	4,410	5,040	5,670	6,300
26 Oblong	1	21	21	3,150	3,780	4,410	5,040	5,670	6,300
28 Oblong	1	19	19	2,850	3,420	3,990	4,560	5,130	5,700
30 Oblong	1	19	19	2,850	3,420	3,990	4,560	5,130	5,700
1 Round	6	36	216	32,400	38,880	45,360	51,840	58,320	64,800
2 Round	5	32	160	24,000	28,800	33,600	38,400	43,200	48,000
3 Round	5	28	140	21,000	25,200	29,400	33,600	37,800	42,000
4 Round	4	25	100	15,000	18,000	21,000	24,000	27,000	30,000
5 Round	4	24	96	14,400	17,280	20,160	23,040	25,920	28,800
6 Round	4	23	92	13,800	16,560	19,320	22,080	24,840	27,600
7 Round	4	22	88	13,200	15,840	18,480	21,120	23,760	26,400
9 Round	4	21	84	12,600	15,120	17,640	20,160	22,680	25,200
15 Round	3	16	48	7,200	8,640	10,080	11,520	12,960	14,400
28 Round	3	16	48	7,200	8,640	10,080	11,520	12,960	14,400
35 Round	3	15	45	6,750	8,100	9,450	10,800	12,150	13,500
38 Round	3	15	45	6,750	8,100	9,450	10,800	12,150	13,500
90 Round	1	11	11	1,650	1,980	2,310	2,640	2,970	3,300

TECHNOPHAR

Technophar Global Headquarters

www.technophar.com

Copyright Technophar ©2021

2021-11-08 rev.

SOFTGEL CAPSULE TOOLING

DIE ROLLS, WEDGES & MORE



- ✓ DIE ROLLS
- ✓ INJECTION WEDGES
- ✓ TIMING GEARS
- ✓ DISTRIBUTION PLATES
- ✓ SPREADER BOXES
- ✓ SHUT-OFF VALVES



Helping companies improve manufacturing processes through efficiency, quality, and by providing effective solutions.

Soft Gel Capsule Tooling Parts

Die Rolls

High-quality precision parts are made from long-lasting durable 7075 aircraft grade aluminum with high corrosion resistance. The smooth surfaces prevent gelatin from sticking and improves release of formed capsules.

Advantages:

- Quality craftsmanship - free of scratches
- Designed with precision
- Corrosive resistant
- Durable with 7075 aircraft - grade aluminum
- Two/three step land die rolls optional



Wedges

Injection wedges help determine accuracy of the soft gel encapsulation process and are offered in various configurations.



Advantages:

- Compatible with Technophar and other manufacture soft gel machine models
- Teflon coated (FDA Approved)
- Brass or aluminum options available
- Available in all configurations & sizes
- Superior heat control

Distribution Plates & Timing Gears

High-quality durable distribution plates (brass or stainless steel) and timing gears available for all your soft gel machine needs.

Available in different specifications according to customer requirements.



Soft Gel Capsule Tooling Parts

Services



SHORT LEAD TIME
TAKE ADVANTAGE OF SHORT LEAD TIMES.



FAST DELIVERY
WE SHIP GLOBALLY USING EXPEDITED SERVICES.



TECH SUPPORT
WE OFFER PROFESSIONAL SUPPORT/SOLUTIONS TO HELP ENSURE EFFICIENCY AND INCREASED OUTPUT CAPACITY.



SPECIAL REQUESTS
CONTACT US FOR DETAILS FOR PARTS & SPECIAL REQUESTS.
(DISTRIBUTION PLATES, TIMING GEARS, WEDGES ETC.)

Call Today:
Tel: (519) -946-0800

TECHNOPHAR

Technophar Global Headquarters

www.technophar.com

Copyright Technophar ©2022 2022-01-18 rev.




THE RIGHT SOLUTION. EVERYTIME.

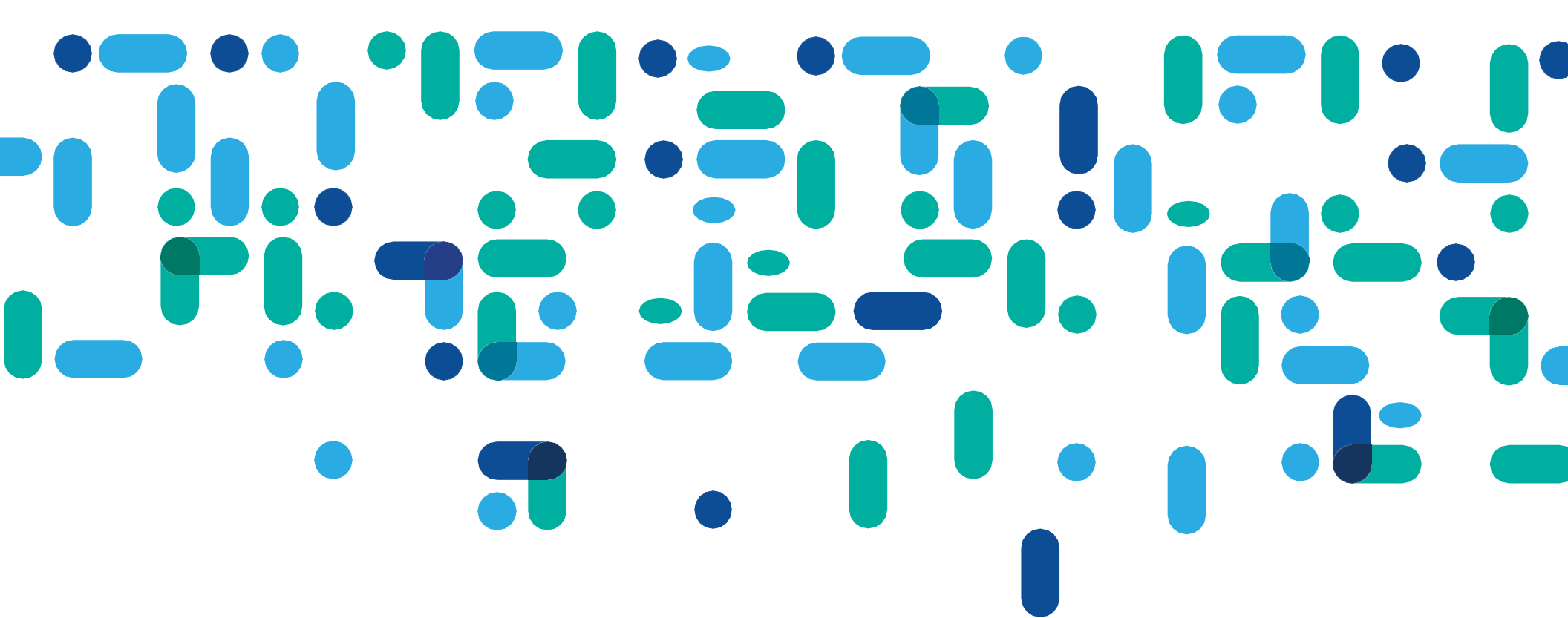
Always giving you more

Looking for other soft gel manufacturing equipment or services? Technophar offers many other products and services designed to give you the same level of technology and quality you've come to expect from us.



-  Soft Gel Machines
-  Soft Gel Drying Systems
-  Soft Gel Auxiliary Equipment
-  Spare Parts & Tooling
-  Pharmaceutical Equipment
-  Preventative Maintenance
-  Operator Training
-  Equipment Upgrades
-  Turnkey Solutions
-  Commissioning & Setup





Get in touch

Looking to learn more about our lineup of products and services? Or simply want more information about our brand? Contact us and one of our highly trained representatives will be happy to help.

www.technophar.com



A QUALICAPS COMPANY

Technophar Equipment & Service

01-17-2023 rev. 4



Mitsubishi Chemical Group Corporation