



technophar

A QUALICAPS COMPANY

The Ultimate Guide to Softgel Encapsulation Equipment



The Ultimate Guide to Softgel Encapsulation Equipment

Across the globe, individuals from all walks of life rely on vitamins, supplements, and pharmaceuticals to maintain a happy and healthy lifestyle. Attaining a high standard of living is made possible, at least in part, by encapsulation machines and manufacturing equipment. Encapsulation machines ensure that precisely the right dose of liquid fill gets contained within each capsule and that large quantities of capsules are produced with precision and efficiency. For example, consider this: Softgel capsule machines are now capable of producing over 529,920 capsules per hour! Procuring the right equipment makes a huge difference.

The nutraceutical industry is currently experiencing a period of growth and innovation, and selecting the right encapsulation manufacturing equipment or updating out-of-date machinery is essential if you want to benefit from this upsurge while maintaining a superior level of quality and professionalism. The right equipment can also lower labour costs, reduce the number of defective capsules, and last longer—so making an informed investment now could turn into significant savings in the long run.

When exploring equipment options, the size of the investment might be a factor. There might be a large upfront cost when purchasing or upgrading equipment, though the higher price tag tends to come with superior quality and performance. When looking to pay less or capitalize on quick savings, it's important to know that many suppliers do not sell equipment with longevity in mind. Instead, they sell subpar machinery to companies who are unable or unwilling to absorb the upfront cost of quality manufacturing equipment. However, equipment that is built to last and that optimizes the entire encapsulation process at the same time? That is truly a priceless investment.

Do you need some guidance when it comes to softgel encapsulation equipment? We've put together some information to help you navigate your way to making a smart decision.

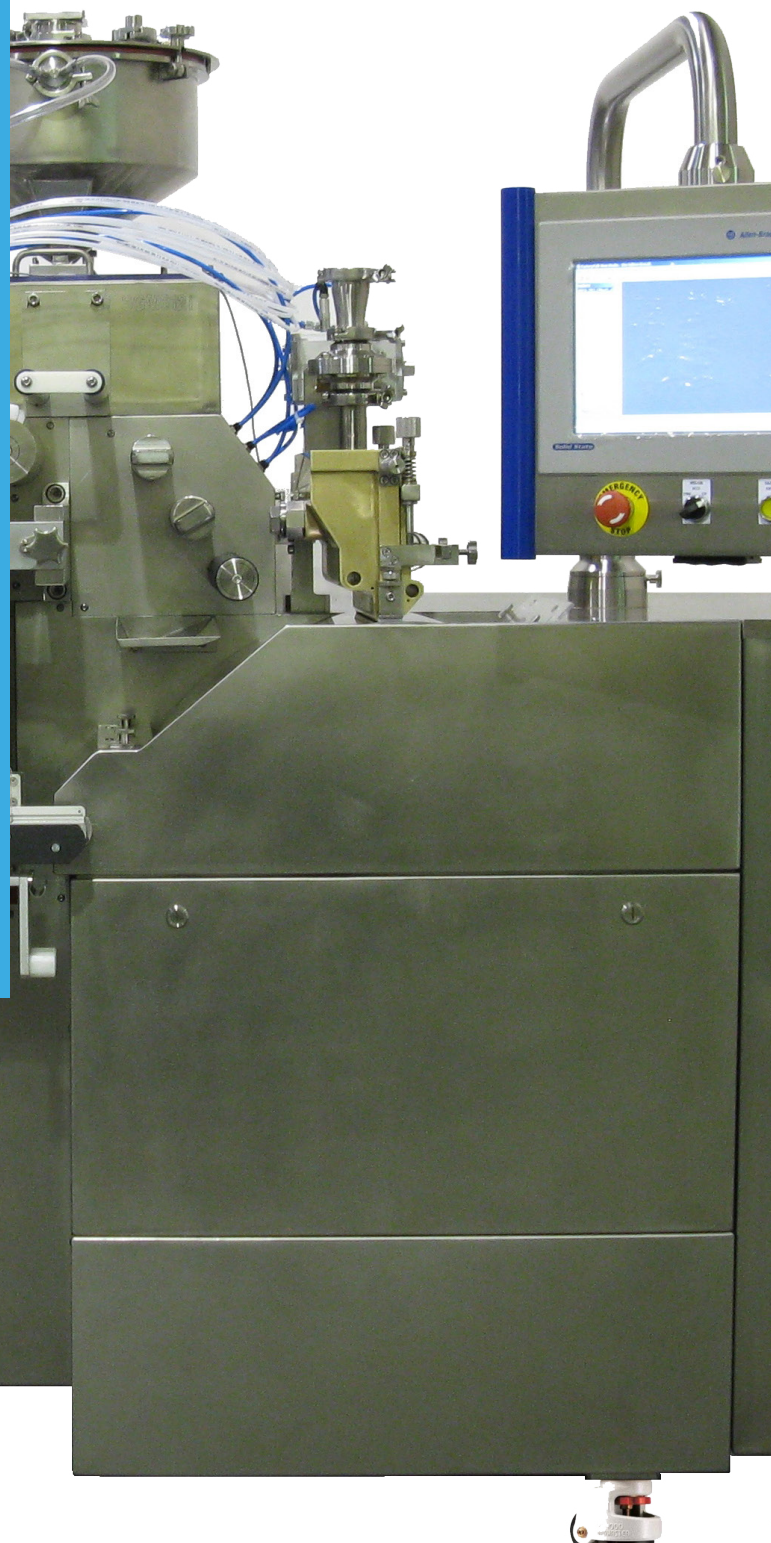


ENCAPSULATION EQUIPMENT

Softgel Machines

A rotary die machine capable of producing finished softgel capsules, filled with total precision and accuracy. Models range from lab scale to the highest commercial scale, depending on your needs.

If your soft capsule machine does not include a programmable logic controller (PLC), it may be time to upgrade to newer technology. PLCs include a touchscreen that can easily manage all production and process variables. Your soft capsule machine should meet the Good Manufacturing Practice (GMP) standards of the pharmaceutical industry and is UL or CE certified.





SIDE NOTE

When to Upgrade to Digital Technology?

If your encapsulation machines are outdated, they are likely hindering you from increasing production to respond to the growing demand in the industry. Older machinery can be inexact or unaligned, throwing your timing off. The fact of the matter is, you shouldn't let slow, inefficient equipment prevent you from capitalizing on exciting new opportunities.

In addition to increasing speed and efficiency, updating your equipment by implementing digital technology will give you greater, more exact control over the entire encapsulation process—increasing accuracy and quality. Managing your equipment's electronic gearing (such as the stroke, medicine pumps, casting drums, and die rolls) will absolutely change the encapsulation process for the better.

If you feel as if you're ready to grow but are being held back by the tools at your disposal, then it's time to consider upgrading.



Tumble Dryers

As far as softgel capsule drying systems go, tumble dryers can be acquired as a standalone piece of equipment or offered in combination with a capsule machine. Tumble dryers with lightweight baskets allow for efficient changeovers, hassle-free cleaning, and thorough inspection.

Changeovers occur once the batch of completed capsules is done: Any part of the machine's equipment that comes into contact with gelatin or fill material must be disassembled, cleaned, and then reassembled. Thus, having lightweight, removable parts can be a huge asset.

Tumble dryers can also include variable speeds, a high-frequency blower, built-in gentle heating, and automatic capsule transfer, in a single or double-deck configuration.





Drying Tunnels

Drying tunnels are required when using tumble dryers to finalize the drying stage. Tunnels are 100% customizable and are built to suit the size and layout of the facility. Insulated tunnels, constructed using GMP standards, are customized and installed onsite. The tunnels are constructed to accommodate the size of stacks of drying trays while they're exposed to airflow.

In Line Dryers

A drying system that is designed to sustain the operation of high-productivity encapsulation machines, removing the need for pre-dryers, drying trays, and tunnels.

The air required for drying purposes is efficiently distributed through direct ducts, and after a drying cycle, capsules are released and ready for inspection.



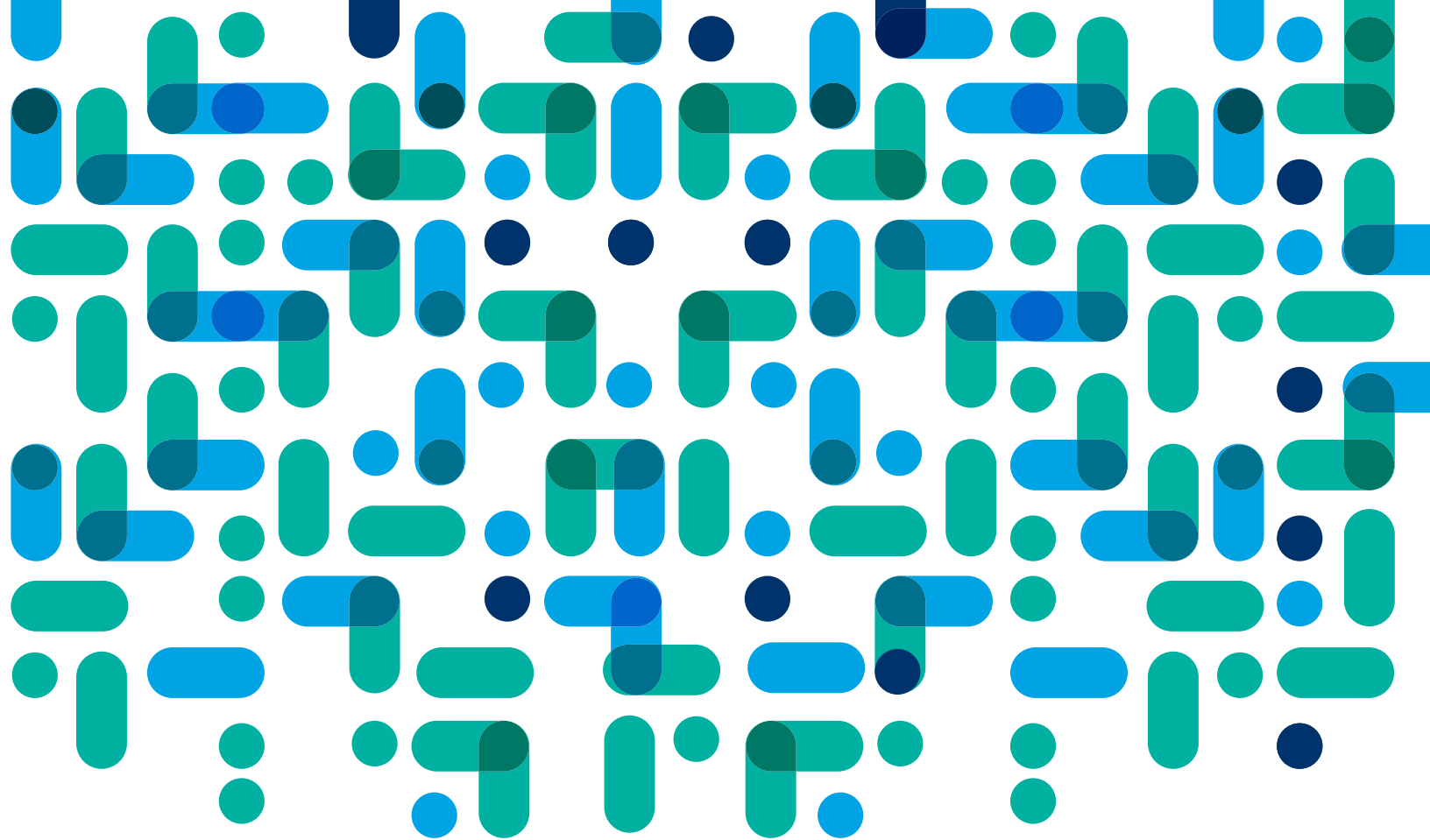


QUALITY IMPROVEMENT EQUIPMENT

Soft Capsule Polishers

A machine capable of operating both manually and automatically, with a 120 kg tumbler basket. Made from stainless steel and FDA-approved parts, fulfilling the GMP pharmaceutical standards, capsule polishers are also portable, hassle-free (requiring no special electrical connection), and are suited for both pharmaceutical and nutraceutical products.





WELL-EQUIPPED FOR SUCCESS WITH: TECHNOPHAR

Leveraging more than three decades of expertise, Technophar is a global supplier of softgel capsule machines, auxiliary equipment, and turnkey solutions. We offer unprecedented value in differentiating products and achieving speed-to-market. Driven by our fundamental principles and commitment to improving upon industry standards, Technophar is dedicated to innovative solutions to solve our customers' future challenges today.

[LEARN MORE](#)

 
technophar
A QUALICAPS COMPANY

Technophar Head Office
3265 Jefferson Blvd.
Windsor, Ontario N8T 2W7

Tel: +1 519 946 0800
www.technophar.com