

technophar

BY ROQUETTE

TES Stand-Alone

Vgen Metering Cart



Front

GMP
STANDARDS



Back

TES Stand-Alone Vgen Metering Cart

Technophar's stand-alone Vgen Metering Cart is engineered for the controlled transfer of plant-based film solutions used in soft gel production lines. Designed for seamless integration into regulated production environments, the system features a precision metering pump, temperature-controlled transfer lines, and an Allen-Bradley PLC with an intuitive HMI interface for real-time process monitoring and control. The system ensures efficient and consistent delivery of gel mass to downstream equipment, emphasizing process reliability, easy cleaning, and smooth integration into both new and existing automated production lines. All components are constructed to meet GMP compliance standards.

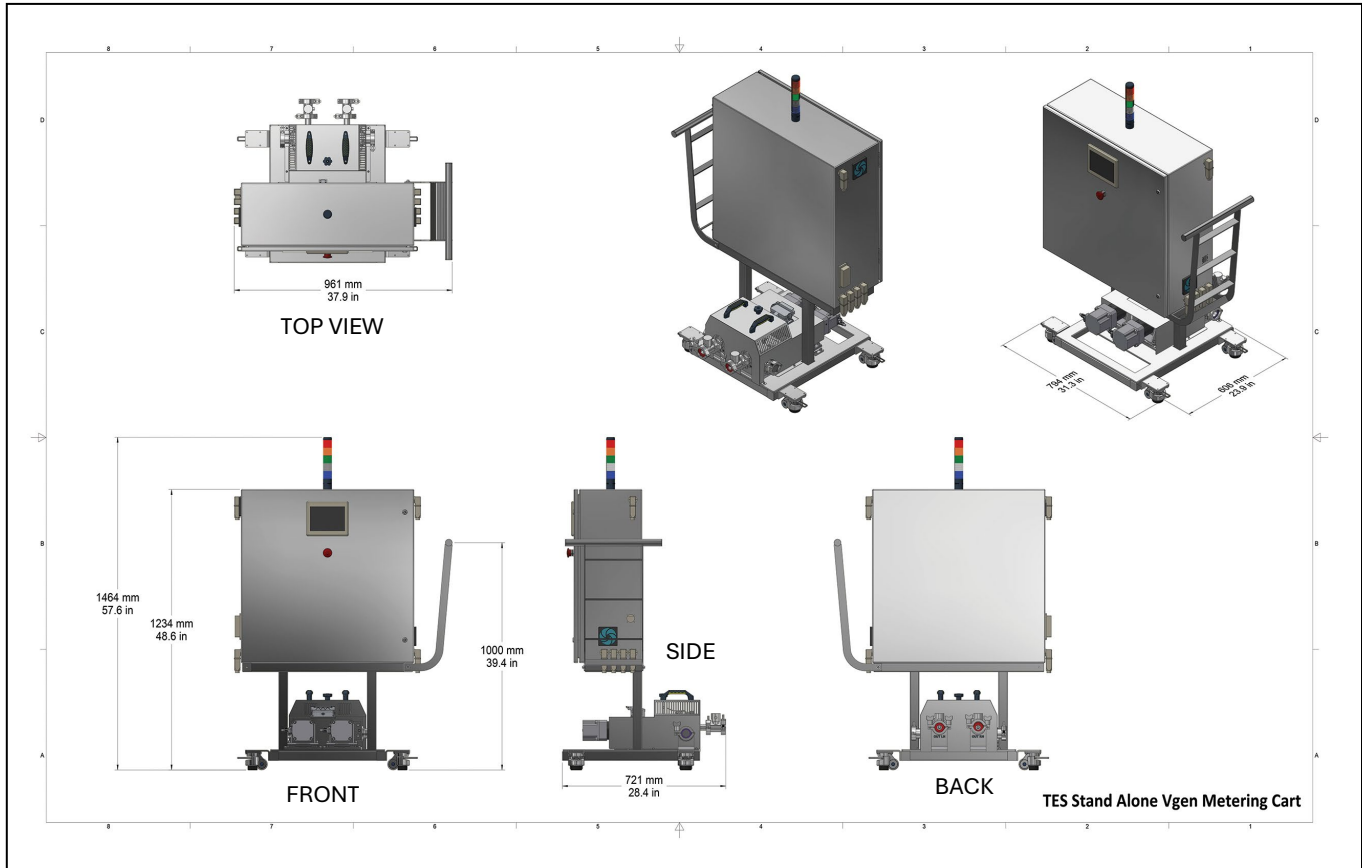
Features

- Standalone system can be utilized for all soft gel machines.
- Two pumps for the supply of plant-based material to TES Vgen closed boxes.
- Heated stainless steel manifold with tri –tri clamp connections for heated supply hoses.
- Operation speed – 0.5 – 6.5 RPMs.
- Control of all and process parameters using programmable Logic Controllers (PLC) with touchscreen.
- Electrical panel and PLC incorporated within the stainless-steel cabinet.
- Sealed construction to prevent any possible rust and allows easy cleaning and maintenance.
- The outside covers of the machine is entirely constructed from stainless steel, designed in accordance with GMP/FDA requirements.
- On wheels for ease of mobility.

TES Stand-Alone Vgen Metering Cart

Specifications

TES Stand-Alone Vgen Metering Cart
Units of Measure: mm/inches



TES Stand-Alone Vgen Metering Cart

Model No.	
TES Stand-Alone Vgen Metering Cart	TES Vgen Metering cart designed to accurately supply plant-based fill solutions.
Specifications	
Dimensions (mm/inches)	961mmL x 606mmW x 1464mmH x / 37.9" L x 23.9" W x 57.6" H
Weight (kg/lbs)	160kgs / 353 lbs
Electrical & Control System	<ul style="list-style-type: none">• Stand-alone pumping system powered at 400 VAC or 208 VAC three-phase.• The process is controlled using Allen-Bradley PLC and HMI.• Security system with 3 access levels (Administrator, Supervisor and Operator).• Gelatin pumps with variable speed and PID temperature control.